

## HIGHLIGHTS OF PRESCRIBING INFORMATION

These highlights do not include all the information needed to use ADCETRIS safely and effectively. See full prescribing information for ADCETRIS.

ADCETRIS® (brentuximab vedotin) for injection, for intravenous use  
Initial U.S. approval: 2011

### WARNING: PROGRESSIVE MULTIFOCAL LEUKOENCEPHALOPATHY (PML)

See full prescribing information for complete boxed warning.

JC virus infection resulting in PML and death can occur in patients receiving ADCETRIS (5.9, 6.1).

## RECENT MAJOR CHANGES

Indications and Usage (1.1, 1.4)	11/2018
Dosage and Administration (2.1, 2.2, 2.3)	11/2018
Dosage and Administration (2.1, 2.2)	03/2018
Warnings and Precautions, Hematologic Toxicities (5.3)	03/2018

## INDICATIONS AND USAGE

ADCETRIS is a CD30-directed antibody-drug conjugate indicated for treatment of adult patients with:

- Previously untreated Stage III or IV classical Hodgkin lymphoma (cHL), in combination with doxorubicin, vinblastine, and dacarbazine (1.1).
- Classical Hodgkin lymphoma (cHL) at high risk of relapse or progression as post-autologous hematopoietic stem cell transplantation (auto-HSCT) consolidation (1.2).
- Classical Hodgkin lymphoma (cHL) after failure of auto-HSCT or after failure of at least two prior multi-agent chemotherapy regimens in patients who are not auto-HSCT candidates (1.3).
- Previously untreated systemic anaplastic large cell lymphoma (sALCL) or other CD30-expressing peripheral T-cell lymphomas (PTCL), including angioimmunoblastic T-cell lymphoma and PTCL not otherwise specified, in combination with cyclophosphamide, doxorubicin, and prednisone (1.4)
- Systemic anaplastic large cell lymphoma (sALCL) after failure of at least one prior multi-agent chemotherapy regimen (1.5).
- Primary cutaneous anaplastic large cell lymphoma (pcALCL) or CD30-expressing mycosis fungoides (MF) who have received prior systemic therapy (1.6).

## DOSAGE AND ADMINISTRATION

- Administer only as an intravenous infusion over 30 minutes (2.1).
- The recommended dose as monotherapy is 1.8 mg/kg up to a maximum of 180 mg every 3 weeks (2.1).
- The recommended dose in combination with chemotherapy for previously untreated Stage III or IV cHL is 1.2 mg/kg up to a maximum of 120 mg every 2 weeks for a maximum of 12 doses (2.1).
- The recommended dose in combination with chemotherapy for previously untreated PTCL is 1.8 mg/kg up to a maximum of 180 mg every 3 weeks for 6 to 8 doses (2.1).
- Reduce dose in patients with mild hepatic impairment (2.3).

## DOSAGE FORMS AND STRENGTHS

For injection: 50 mg lyophilized powder in a single-dose vial (3).

## CONTRAINDICATIONS

Concomitant use with bleomycin due to pulmonary toxicity (4).

## WARNINGS AND PRECAUTIONS

- **Peripheral neuropathy:** Monitor patients for neuropathy and institute dose modifications accordingly (5.1).
- **Anaphylaxis and infusion reactions:** If an infusion reaction occurs, interrupt the infusion. If anaphylaxis occurs, immediately discontinue the infusion (5.2).
- **Hematologic toxicities:** Monitor complete blood counts. Monitor for signs of infection. Manage using dose delays and growth factor support (5.3).
- **Serious infections and opportunistic infections:** Closely monitor patients for the emergence of bacterial, fungal or viral infections (5.4).
- **Tumor lysis syndrome:** Closely monitor patients with rapidly proliferating tumor or high tumor burden (5.5).
- **Hepatotoxicity:** Monitor liver enzymes and bilirubin (5.8).
- **Pulmonary toxicity:** Monitor patients for new or worsening symptoms (5.10).
- **Serious dermatologic reactions:** Discontinue if Stevens-Johnson syndrome or toxic epidermal necrolysis occurs (5.11).
- **Gastrointestinal complications:** Monitor patients for new or worsening symptoms (5.12).
- **Embryo-Fetal toxicity:** Can cause fetal harm. Advise females of reproductive potential of the potential risk to a fetus and to avoid pregnancy (5.13).

## ADVERSE REACTIONS

The most common adverse reactions (≥20% in any study) were peripheral neuropathy, fatigue, nausea, diarrhea, neutropenia, upper respiratory tract infection, pyrexia, constipation, vomiting, alopecia, decreased weight, abdominal pain, anemia, stomatitis, lymphopenia, and mucositis (6.1).

To report SUSPECTED ADVERSE REACTIONS, contact Seattle Genetics, Inc. at 1-855-473-2436 or FDA at 1-800-FDA-1088 or [www.fda.gov/Safety/MedWatch](http://www.fda.gov/Safety/MedWatch).

## DRUG INTERACTIONS

Concomitant use of strong CYP3A4 inhibitors or inducers has the potential to affect the exposure to monomethyl auristatin E (MMAE) (7.1).

## USE IN SPECIFIC POPULATIONS

Moderate or severe hepatic impairment or severe renal impairment: MMAE exposure and adverse reactions are increased. Avoid use (5.6, 5.7, 8.6, 8.7).

Lactation: Advise women not to breastfeed (8.2).

See 17 for PATIENT COUNSELING INFORMATION.

Revised: 11/2018

**FULL PRESCRIBING INFORMATION: CONTENTS\*****WARNING: PROGRESSIVE MULTIFOCAL  
LEUKOENCEPHALOPATHY (PML)****1 INDICATIONS AND USAGE**

- 1.1 Previously untreated Stage III or IV classical Hodgkin lymphoma (cHL), in combination with chemotherapy
- 1.2 Classical Hodgkin lymphoma (cHL) consolidation
- 1.3 Relapsed classical Hodgkin lymphoma (cHL)
- 1.4 Previously untreated systemic anaplastic large cell lymphoma (sALCL) or other CD30-expressing peripheral T-cell lymphomas (PTCL), in combination with chemotherapy
- 1.5 Relapsed systemic anaplastic large cell lymphoma (sALCL)
- 1.6 Relapsed primary cutaneous anaplastic large cell lymphoma (pcALCL) or CD30-expressing mycosis fungoides (MF)

**2 DOSAGE AND ADMINISTRATION**

- 2.1 Recommended Dosage
- 2.2 Recommended Prophylactic Medications
- 2.3 Dose Modification
- 2.4 Instructions for Preparation and Administration

**3 DOSAGE FORMS AND STRENGTHS****4 CONTRAINDICATIONS****5 WARNINGS AND PRECAUTIONS**

- 5.1 Peripheral Neuropathy
- 5.2 Anaphylaxis and Infusion Reactions
- 5.3 Hematologic Toxicities
- 5.4 Serious Infections and Opportunistic Infections
- 5.5 Tumor Lysis Syndrome
- 5.6 Increased Toxicity in the Presence of Severe Renal Impairment
- 5.7 Increased Toxicity in the Presence of Moderate or Severe Hepatic Impairment
- 5.8 Hepatotoxicity
- 5.9 Progressive Multifocal Leukoencephalopathy
- 5.10 Pulmonary Toxicity
- 5.11 Serious Dermatologic Reactions
- 5.12 Gastrointestinal Complications
- 5.13 Embryo-Fetal Toxicity

**6 ADVERSE REACTIONS**

- 6.1 Clinical Trial Experience
- 6.2 Post Marketing Experience
- 6.3 Immunogenicity

**7 DRUG INTERACTIONS**

- 7.1 Effect of Other Drugs on ADCETRIS

**8 USE IN SPECIFIC POPULATIONS**

- 8.1 Pregnancy
- 8.2 Lactation
- 8.3 Females and Males of Reproductive Potential
- 8.4 Pediatric Use
- 8.5 Geriatric Use
- 8.6 Renal Impairment
- 8.7 Hepatic Impairment

**10 OVERDOSAGE****11 DESCRIPTION****12 CLINICAL PHARMACOLOGY**

- 12.1 Mechanism of Action
- 12.2 Pharmacodynamics
- 12.3 Pharmacokinetics

**13 NONCLINICAL TOXICOLOGY**

- 13.1 Carcinogenesis, Mutagenesis, Impairment of Fertility

**14 CLINICAL STUDIES**

- 14.1 Classical Hodgkin Lymphoma
- 14.2 Systemic Anaplastic Large Cell Lymphoma and Other CD30-Expressing Peripheral T-Cell Lymphomas
- 14.3 Systemic Anaplastic Large Cell Lymphoma
- 14.4 Primary Cutaneous Anaplastic Large Cell Lymphoma and CD30-Expressing Mycosis Fungoides

**15 REFERENCES****16 HOW SUPPLIED/STORAGE AND HANDLING**

- 16.1 How Supplied
- 16.2 Storage
- 16.3 Special Handling

**17 PATIENT COUNSELING INFORMATION**

\*Sections or subsections omitted from the full prescribing information are not listed.

## FULL PRESCRIBING INFORMATION

### **WARNING: PROGRESSIVE MULTIFOCAL LEUKOENCEPHALOPATHY (PML)**

**JC virus infection resulting in PML and death can occur in patients receiving ADCETRIS [see Warnings and Precautions (5.9), Adverse Reactions (6.1)].**

## **1 INDICATIONS AND USAGE**

### **1.1 Previously untreated Stage III or IV classical Hodgkin lymphoma (cHL), in combination with chemotherapy**

ADCETRIS is indicated for the treatment of adult patients with previously untreated Stage III or IV cHL, in combination with doxorubicin, vinblastine, and dacarbazine.

### **1.2 Classical Hodgkin lymphoma (cHL) consolidation**

ADCETRIS is indicated for the treatment of adult patients with cHL at high risk of relapse or progression as post-autologous hematopoietic stem cell transplantation (auto-HSCT) consolidation.

### **1.3 Relapsed classical Hodgkin lymphoma (cHL)**

ADCETRIS is indicated for the treatment of adult patients with cHL after failure of auto-HSCT or after failure of at least two prior multi-agent chemotherapy regimens in patients who are not auto-HSCT candidates.

### **1.4 Previously untreated systemic anaplastic large cell lymphoma (sALCL) or other CD30-expressing peripheral T-cell lymphomas (PTCL), in combination with chemotherapy**

ADCETRIS is indicated for the treatment of adult patients with previously untreated sALCL or other CD30-expressing PTCL, including angioimmunoblastic T-cell lymphoma and PTCL not otherwise specified, in combination with cyclophosphamide, doxorubicin, and prednisone.

### **1.5 Relapsed systemic anaplastic large cell lymphoma (sALCL)**

ADCETRIS is indicated for the treatment of adult patients with sALCL after failure of at least one prior multi-agent chemotherapy regimen.

### **1.6 Relapsed primary cutaneous anaplastic large cell lymphoma (pcALCL) or CD30-expressing mycosis fungoides (MF)**

ADCETRIS is indicated for the treatment of adult patients with pcALCL or CD30-expressing MF who have received prior systemic therapy.

## **2 DOSAGE AND ADMINISTRATION**

### **2.1 Recommended Dosage**

The recommended ADCETRIS dosage is provided in Table 1. Administer ADCETRIS as a 30-minute intravenous infusion.

The recommended dose for patients with renal or hepatic impairment is provided in Table 2.

For dosing instructions of combination agents administered with ADCETRIS, see *Clinical Studies (14.1 and 14.2)* and the manufacturer's prescribing information.

**Table 1: Recommended ADCETRIS Dosage**

Indication	Recommended Dose*	Frequency and Duration
<b>Previously Untreated Stage III or IV Classical Hodgkin Lymphoma</b>	1.2 mg/kg up to a maximum of 120 mg in combination with chemotherapy	Administer every 2 weeks until a maximum of 12 doses, disease progression, or unacceptable toxicity
<b>Classical Hodgkin Lymphoma Consolidation</b>	1.8 mg/kg up to a maximum of 180 mg	Initiate ADCETRIS treatment within 4-6 weeks post-auto-HSCT or upon recovery from auto-HSCT. Administer every 3 weeks until a maximum of 16 cycles, disease progression, or unacceptable toxicity
<b>Relapsed Classical Hodgkin Lymphoma</b>	1.8 mg/kg up to a maximum of 180 mg	Administer every 3 weeks until disease progression or unacceptable toxicity
<b>Previously Untreated Systemic ALCL or Other CD30-expressing Peripheral T-Cell Lymphomas</b>	1.8 mg/kg up to a maximum of 180 mg in combination with chemotherapy	Administer every 3 weeks with each cycle of chemotherapy for 6 to 8 doses
<b>Relapsed Systemic ALCL</b>	1.8 mg/kg up to a maximum of 180 mg	Administer every 3 weeks until disease progression or unacceptable toxicity
<b>Relapsed Primary Cutaneous ALCL or CD30-expressing Mycosis Fungoides</b>	1.8 mg/kg up to a maximum of 180 mg	Administer every 3 weeks until a maximum of 16 cycles, disease progression, or unacceptable toxicity

\* The dose for patients weighing greater than 100 kg should be calculated based on a weight of 100 kg

**Table 2: Recommended Dose for Patients with Renal or Hepatic Impairment**

Recommended Dose* from Table 1	Degree of Impairment	Recommended Dose*
<b>Renal Impairment</b>		
1.2 mg/kg up to a maximum of 120 mg every 2 weeks	Normal Mild (CrCL greater than 50-80 mL/min) Moderate (CrCL 30-50 mL/min)	1.2 mg/kg up to a maximum of 120 mg every 2 weeks
	Severe (CrCL less than 30 mL/min)	Avoid use [see <i>Warnings and Precautions (5.6)</i> ]
1.8 mg/kg up to a maximum of 180 mg every 3 weeks	Normal Mild (CrCL greater than 50-80 mL/min) Moderate (CrCL 30-50 mL/min)	1.8 mg/kg up to a maximum of 180 mg every 3 weeks

<b>Recommended Dose* from Table 1</b>	<b>Degree of Impairment</b>	<b>Recommended Dose*</b>
	Severe (CrCL less than 30 mL/min)	Avoid use [see Warnings and Precautions (5.6)]
<b>Hepatic Impairment</b>		
1.2 mg/kg up to a maximum of 120 mg every 2 weeks	Normal	1.2 mg/kg up to a maximum of 120 mg every 2 weeks
	Mild (Child-Pugh A)	0.9 mg/kg up to a maximum of 90 mg every 2 weeks
	Moderate (Child-Pugh B) Severe (Child-Pugh C)	Avoid use [see Warnings and Precautions (5.7)]
1.8 mg/kg up to a maximum of 180 mg every 3 weeks	Normal	1.8 mg/kg up to a maximum of 180 mg every 3 weeks
	Mild (Child-Pugh A)	1.2 mg/kg up to a maximum of 120 mg every 3 weeks
	Moderate (Child-Pugh B) Severe (Child-Pugh C)	Avoid use [see Warnings and Precautions (5.7)]

\* The dose for patients weighing greater than 100 kg should be calculated based on a weight of 100 kg.

CrCL: creatinine clearance

## 2.2 Recommended Prophylactic Medications

In patients with previously untreated Stage III or IV cHL who are treated with ADCETRIS + doxorubicin, vinblastine, and dacarbazine (AVD), administer G-CSF beginning with Cycle 1.

In patients with previously untreated PTCL who are treated with ADCETRIS + cyclophosphamide, doxorubicin, and prednisone (CHP), administer G-CSF beginning with Cycle 1.

## 2.3 Dose Modification

**Table 3: Dose Modifications for Peripheral Neuropathy or Neutropenia**

Recommended ADCETRIS Dose from Table 1*	Monotherapy or Combination Therapy	Severity	Dose Modification
<b>Peripheral Neuropathy</b>			
1.2 mg/kg up to a maximum of 120 mg every 2 weeks	In combination with chemotherapy	Grade 2	Reduce dose to 0.9 mg/kg up to a maximum of 90 mg every 2 weeks
		Grade 3	Hold ADCETRIS dosing until improvement to Grade 2 or lower  Restart at 0.9 mg/kg up to a maximum of 90 mg every 2 weeks  Consider modifying the dose of other neurotoxic chemotherapy agents
		Grade 4	Discontinue dosing
1.8 mg/kg up to a maximum of 180 mg every 3 weeks	As monotherapy	New or worsening Grade 2 or 3	Hold dosing until improvement to baseline or Grade 1  Restart at 1.2 mg/kg up to a maximum of 120 mg every 3 weeks
		Grade 4	Discontinue dosing
	In combination with chemotherapy	Grade 2	Sensory neuropathy: Continue treatment at same dose  Motor neuropathy: Reduce dose to 1.2 mg/kg up to a maximum of 120 mg every 3 weeks
		Grade 3	Sensory neuropathy: Reduce dose to 1.2 mg/kg, up to a maximum of 120 mg every 3 weeks  Motor neuropathy: Discontinue dosing
		Grade 4	Discontinue dosing
		<b>Neutropenia</b>	
1.2 mg/kg up to a maximum of 120 mg every 2 weeks	In combination with chemotherapy	Grade 3 or 4	Administer G-CSF prophylaxis for subsequent cycles for patients not receiving primary G-CSF prophylaxis
1.8 mg/kg up to a maximum of 180 mg every 3 weeks	In combination with chemotherapy	Grade 3 or 4	Administer G-CSF prophylaxis in subsequent cycles for patients not receiving primary G-CSF

Recommended ADCETRIS Dose from Table 1*	Monotherapy or Combination Therapy	Severity	Dose Modification
1.8 mg/kg up to a maximum of 180 mg* every 3 weeks	As monotherapy	Grade 3 or 4	Hold dosing until improvement to baseline or Grade 2 or lower Consider G-CSF prophylaxis for subsequent cycles
		Recurrent Grade 4 despite G-CSF prophylaxis	Consider discontinuation or dose reduction to 1.2 mg/kg up to a maximum of 120 mg every 3 weeks

\* The dose for patients weighing greater than 100 kg should be calculated based on a weight of 100 kg

## 2.4 Instructions for Preparation and Administration

### Administration

- Administer ADCETRIS as an intravenous infusion only.
- **Do not mix ADCETRIS with, or administer as an infusion with, other medicinal products.**

### Reconstitution

- Follow procedures for proper handling and disposal of anticancer drugs [see References (15)].
- Use appropriate aseptic technique for reconstitution and preparation of dosing solutions.
- Determine the number of 50 mg vials needed based on the patient's weight and the prescribed dose [see Dosage and Administration (2.1)].
- Reconstitute each 50 mg vial of ADCETRIS with 10.5 mL of Sterile Water for Injection, USP, to yield a single-dose solution containing 5 mg/mL brentuximab vedotin.
- Direct the stream toward the wall of vial and not directly at the cake or powder.
- Gently swirl the vial to aid dissolution. **DO NOT SHAKE.**
- Inspect the reconstituted solution for particulates and discoloration. The reconstituted solution should be clear to slightly opalescent, colorless, and free of visible particulates.
- Following reconstitution, dilute immediately into an infusion bag. If not diluted immediately, store the solution at 2–8°C (36–46°F) and use within 24 hours of reconstitution. **DO NOT FREEZE.**
- Discard any unused portion left in the vial.

### Dilution

- Calculate the required volume of 5 mg/mL reconstituted ADCETRIS solution needed.
- Withdraw this amount from the vial and immediately add it to an infusion bag containing a minimum volume of 100 mL of 0.9% Sodium Chloride Injection, 5% Dextrose Injection

or Lactated Ringer's Injection to achieve a final concentration of 0.4 mg/mL to 1.8 mg/mL brentuximab vedotin.

- Gently invert the bag to mix the solution.
- Following dilution, infuse the ADCETRIS solution immediately. If not used immediately, store the solution at 2–8°C (36–46°F) and use within 24 hours of reconstitution. **DO NOT FREEZE.**

### 3 DOSAGE FORMS AND STRENGTHS

For injection: 50 mg of brentuximab vedotin as a sterile, white to off-white lyophilized, preservative-free cake or powder in a single-dose vial for reconstitution.

### 4 CONTRAINDICATIONS

ADCETRIS is contraindicated with concomitant bleomycin due to pulmonary toxicity (e.g., interstitial infiltration and/or inflammation) [*see Adverse Reactions (6.1)*].

### 5 WARNINGS AND PRECAUTIONS

#### 5.1 Peripheral Neuropathy

ADCETRIS treatment causes a peripheral neuropathy that is predominantly sensory. Cases of peripheral motor neuropathy have also been reported. ADCETRIS-induced peripheral neuropathy is cumulative.

In studies of ADCETRIS as monotherapy, 62% of patients experienced any grade of neuropathy. The median time to onset of any grade was 3 months (range, 0–12). Of the patients who experienced neuropathy, 62% had complete resolution, 24% had partial improvement, and 14% had no improvement at the time of their last evaluation. The median time from onset to resolution or improvement of any grade was 5 months (range, 0–45). Of the patients who reported neuropathy, 38% had residual neuropathy at the time of their last evaluation [Grade 1 (27%), Grade 2 (9%), Grade 3 (2%)].

In ECHELON-1 (Study 5), 67% of patients treated with ADCETRIS + AVD experienced any grade of neuropathy. The median time to onset of any grade was 2 months (range, 0–7), of Grade 2 was 3 months (range, 0–6) and of Grade 3 was 4 months (range, <1–7). The median time from onset to resolution or improvement of any grade was 2 months (range, 0–32), of Grade 2 was 3 months (range, 0–28), and of Grade 3 was 4 months (range, 0–32). Of these patients, 43% had complete resolution, 24% had partial improvement (a decrease in severity by one or more grades from worst grade), and 33% had no improvement at the time of their last evaluation. Of the patients with residual neuropathy at the time of their last evaluation (57%), patients had Grade 1 (36%), Grade 2 (16%), Grade 3 (4%), or Grade 4 (<1%) neuropathy.

In ECHELON-2 (Study 6), 52% of patients treated with ADCETRIS + CHP experienced new or worsening peripheral neuropathy of any grade (by maximum grade, 34% Grade 1, 15% Grade 2, 3% Grade 3, < 1% Grade 4). The peripheral neuropathy was predominantly sensory (94% sensory, 16% motor) and had a median onset time of 2 months (range, <1–5). At last evaluation, 50% had complete resolution of neuropathy, 12% had partial improvement, and 38% had no improvement. The median time to resolution or improvement overall was 4 months



(range, 0–45). Of patients with residual neuropathy at their last evaluation, the neuropathy was Grade 1 in 72%, Grade 2 in 25%, and Grade 3 in 3%.

Monitor patients for symptoms of neuropathy, such as hypoesthesia, hyperesthesia, paresthesia, discomfort, a burning sensation, neuropathic pain, or weakness. Patients experiencing new or worsening peripheral neuropathy may require a delay, change in dose, or discontinuation of ADCETRIS [see *Dosage and Administration (2.3) and Adverse Reactions (6.1)*].

## **5.2 Anaphylaxis and Infusion Reactions**

Infusion-related reactions, including anaphylaxis, have occurred with ADCETRIS. Monitor patients during infusion. If anaphylaxis occurs, immediately and permanently discontinue administration of ADCETRIS and administer appropriate medical therapy. If an infusion-related reaction occurs, interrupt the infusion and institute appropriate medical management. Patients who have experienced a prior infusion-related reaction should be premedicated for subsequent infusions. Premedication may include acetaminophen, an antihistamine, and a corticosteroid.

## **5.3 Hematologic Toxicities**

Fatal and serious cases of febrile neutropenia have been reported with ADCETRIS. Prolonged ( $\geq 1$  week) severe neutropenia and Grade 3 or Grade 4 thrombocytopenia or anemia can occur with ADCETRIS.

Start primary prophylaxis with G-CSF beginning with Cycle 1 for patients who receive ADCETRIS in combination with chemotherapy for previously untreated Stage III or IV cHL or previously untreated PTCL [see *Dosage and Administration (2.3) and Adverse Reactions (6.1)*].

Monitor complete blood counts prior to each dose of ADCETRIS. Monitor more frequently for patients with Grade 3 or 4 neutropenia. Monitor patients for fever. If Grade 3 or 4 neutropenia develops, consider dose delays, reductions, discontinuation, or G-CSF prophylaxis with subsequent ADCETRIS doses [see *Dosage and Administration (2.2, 2.3)*].

## **5.4 Serious Infections and Opportunistic Infections**

Serious infections and opportunistic infections such as pneumonia, bacteremia, and sepsis or septic shock (including fatal outcomes) have been reported in patients treated with ADCETRIS. Monitor patients closely during treatment for the emergence of possible bacterial, fungal, or viral infections.

## **5.5 Tumor Lysis Syndrome**

Patients with rapidly proliferating tumor and high tumor burden may be at increased risk of tumor lysis syndrome. Monitor closely and take appropriate measures.

## **5.6 Increased Toxicity in the Presence of Severe Renal Impairment**

The frequency of  $\geq$ Grade 3 adverse reactions and deaths was greater in patients with severe renal impairment compared to patients with normal renal function. Due to higher MMAE exposure,  $\geq$ Grade 3 adverse reactions may be more frequent in patients with severe renal

impairment compared to patients with normal renal function. Avoid the use of ADCETRIS in patients with severe renal impairment [creatinine clearance (CrCL) <30 mL/min] [see *Use in Specific Populations (8.6)*].

### **5.7 Increased Toxicity in the Presence of Moderate or Severe Hepatic Impairment**

The frequency of ≥Grade 3 adverse reactions and deaths was greater in patients with moderate and severe hepatic impairment compared to patients with normal hepatic function. Avoid the use of ADCETRIS in patients with moderate (Child-Pugh B) or severe (Child-Pugh C) hepatic impairment [see *Use in Specific Populations (8.7)*].

### **5.8 Hepatotoxicity**

Fatal and serious cases of hepatotoxicity have occurred in patients receiving ADCETRIS. Cases were consistent with hepatocellular injury, including elevations of transaminases and/or bilirubin. Cases have occurred after the first dose of ADCETRIS or after ADCETRIS rechallenge. Preexisting liver disease, elevated baseline liver enzymes, and concomitant medications may also increase the risk. Monitor liver enzymes and bilirubin. Patients experiencing new, worsening, or recurrent hepatotoxicity may require a delay, change in dose, or discontinuation of ADCETRIS.

### **5.9 Progressive Multifocal Leukoencephalopathy**

Fatal cases of JC virus infection resulting in PML have been reported in ADCETRIS-treated patients. First onset of symptoms occurred at various times from initiation of ADCETRIS therapy, with some cases occurring within 3 months of initial exposure. In addition to ADCETRIS therapy, other possible contributory factors include prior therapies and underlying disease that may cause immunosuppression. Consider the diagnosis of PML in any patient presenting with new-onset signs and symptoms of central nervous system abnormalities. Hold ADCETRIS dosing for any suspected case of PML and discontinue ADCETRIS dosing if a diagnosis of PML is confirmed.

### **5.10 Pulmonary Toxicity**

Fatal and serious events of noninfectious pulmonary toxicity including pneumonitis, interstitial lung disease, and acute respiratory distress syndrome (ARDS), have been reported. Monitor patients for signs and symptoms of pulmonary toxicity, including cough and dyspnea. In the event of new or worsening pulmonary symptoms, hold ADCETRIS dosing during evaluation and until symptomatic improvement.

### **5.11 Serious Dermatologic Reactions**

Fatal and serious cases of Stevens-Johnson syndrome (SJS) and toxic epidermal necrolysis (TEN) have been reported with ADCETRIS. If SJS or TEN occurs, discontinue ADCETRIS and administer appropriate medical therapy.

### **5.12 Gastrointestinal Complications**

Fatal and serious events of acute pancreatitis have been reported. Other fatal and serious gastrointestinal (GI) complications include perforation, hemorrhage, erosion, ulcer, intestinal

obstruction, enterocolitis, neutropenic colitis, and ileus. Lymphoma with preexisting GI involvement may increase the risk of perforation. In the event of new or worsening GI symptoms, including severe abdominal pain, perform a prompt diagnostic evaluation and treat appropriately.

### **5.13 Embryo-Fetal Toxicity**

Based on the mechanism of action and findings in animals, ADCETRIS can cause fetal harm when administered to a pregnant woman. There are no adequate and well-controlled studies of ADCETRIS in pregnant women. In animal reproduction studies, brentuximab vedotin caused embryo-fetal toxicities, including significantly decreased embryo viability, and fetal malformations at maternal exposures that were similar to the clinical dose of 1.8 mg/kg every three weeks.

Advise females of reproductive potential to avoid pregnancy during ADCETRIS treatment and for at least 6 months after the final dose of ADCETRIS. Advise a pregnant woman of the potential risk to the fetus [*see Use in Specific Populations (8.1, 8.3)*].

## **6 ADVERSE REACTIONS**

The following serious adverse reactions are described elsewhere in the labeling:

- Peripheral Neuropathy [*see Warnings and Precautions (5.1)*]
- Anaphylaxis and Infusion Reactions [*see Warnings and Precautions (5.2)*]
- Hematologic Toxicities [*see Warnings and Precautions (5.3)*]
- Serious Infections and Opportunistic Infections [*see Warnings and Precautions (5.4)*]
- Tumor Lysis Syndrome [*see Warnings and Precautions (5.5)*]
- Increased Toxicity in the Presence of Severe Renal Impairment [*see Warnings and Precautions (5.6)*]
- Increased Toxicity in the Presence of Moderate or Severe Hepatic Impairment [*see Warnings and Precautions (5.7)*]
- Hepatotoxicity [*see Warnings and Precautions (5.8)*]
- Progressive Multifocal Leukoencephalopathy [*see Warnings and Precautions (5.9)*]
- Pulmonary Toxicity [*see Warnings and Precautions (5.10)*]
- Serious Dermatologic Reactions [*see Warnings and Precautions (5.11)*]
- Gastrointestinal Complications [*see Warnings and Precautions (5.12)*]

### **6.1 Clinical Trial Experience**

Because clinical trials are conducted under widely varying conditions, adverse reaction rates observed in clinical trials of a drug cannot be directly compared to rates in the clinical trials of another drug and may not reflect the rates observed in practice.

The data below reflect exposure to ADCETRIS in 931 patients with cHL including 662 patients who received ADCETRIS in combination with chemotherapy in a randomized controlled trial, and 269 who received ADCETRIS as monotherapy (167 in a randomized controlled trial and 102 in a single arm trial). Data summarizing ADCETRIS exposure are also provided for 347 patients with T-cell lymphoma, including 223 patients with PTCL who received ADCETRIS in combination with chemotherapy in a randomized, double-blind, controlled trial; 58 patients with sALCL who received ADCETRIS monotherapy in a single-arm trial; and 66 patients with pcALCL or CD30-expressing MF who received ADCETRIS monotherapy in a randomized, controlled trial. ADCETRIS was administered intravenously at a dose of either 1.2 mg/kg every 2 weeks in combination with AVD, 1.8 mg/kg every 3 weeks in combination with CHP, or 1.8 mg/kg every 3 weeks as monotherapy.

The most common adverse reactions ( $\geq 20\%$ ) with monotherapy were peripheral neuropathy, fatigue, nausea, diarrhea, neutropenia, upper respiratory tract infection, and pyrexia.

The most common adverse reactions ( $\geq 20\%$ ) in combination with AVD were peripheral neuropathy, neutropenia, nausea, constipation, vomiting, fatigue, diarrhea, pyrexia, alopecia, decreased weight, abdominal pain, anemia, and stomatitis.

The most common adverse reactions ( $\geq 20\%$ ) in combination with CHP were anemia, neutropenia, peripheral neuropathy, lymphopenia, nausea, diarrhea, fatigue or asthenia, mucositis, constipation, alopecia, pyrexia, and vomiting.

### ***Previously Untreated Stage III or IV Classical Hodgkin Lymphoma (Study 5: ECHELON-1)***

ADCETRIS in combination with AVD was evaluated for the treatment of previously untreated patients with Stage III or IV cHL in a randomized, open-label, multicenter clinical trial of 1334 patients. Patients were randomized to receive up to 6 cycles of ADCETRIS + AVD or ABVD on Days 1 and 15 of each 28-day cycle. The recommended starting dose of ADCETRIS was 1.2 mg/kg intravenously over 30 minutes, administered approximately 1 hour after completion of AVD therapy. A total of 1321 patients received at least one dose of study treatment (662 ADCETRIS + AVD, 659 ABVD). The median number of treatment cycles in each study arm was 6 (range, 1–6); 76% of patients on the ADCETRIS + AVD arm received 12 doses of ADCETRIS [see *Clinical Studies (14.1)*].

After 75% of patients had started study treatment, the use of prophylactic G-CSF was recommended with the initiation of treatment for all ADCETRIS + AVD treated patients, based on the observed rates of neutropenia and febrile neutropenia [see *Dosage and Administration (2.2)*]. Among 579 patients on the ADCETRIS + AVD arm who did not receive G-CSF primary prophylaxis beginning with Cycle 1, 96% experienced neutropenia (21% with Grade 3; 67% with Grade 4), and 21% had febrile neutropenia (14% with Grade 3; 6% with Grade 4). Among 83 patients on the ADCETRIS + AVD arm who received G-CSF primary prophylaxis beginning with Cycle 1, 61% experienced neutropenia (13% with Grade 3; 27% with Grade 4), and 11% experienced febrile neutropenia (8% with Grade 3; 2% with Grade 4).

Serious adverse reactions, regardless of causality, were reported in 43% of ADCETRIS + AVD-treated patients and 27% of ABVD-treated patients. The most common serious adverse reactions in ADCETRIS + AVD-treated patients were febrile neutropenia (17%), pyrexia (7%), neutropenia and pneumonia (3% each).

Adverse reactions that led to dose delays of one or more drugs in more than 5% of ADCETRIS + AVD-treated patients were neutropenia (21%) and febrile neutropenia (8%) [see *Dosage and Administration (2.2)*]. Adverse reactions led to treatment discontinuation of one or more drugs in 13% of ADCETRIS + AVD-treated patients. Seven percent of patients treated with ADCETRIS + AVD discontinued due to peripheral neuropathy.

There were 9 on-study deaths among ADCETRIS + AVD-treated patients; 7 were associated with neutropenia, and none of these patients had received G-CSF prior to developing neutropenia.

**Table 4: Adverse Reactions Reported in ≥10% of ADCETRIS + AVD-Treated Patients in Previously Untreated Stage III or IV Classical Hodgkin Lymphoma (Study 5: ECHELON-1)**

Adverse Reaction	ADCETRIS + AVD Total N = 662 % of patients			ABVD Total N = 659 % of patients		
	Any Grade	Grade 3	Grade 4	Any Grade	Grade 3	Grade 4
<b><i>Blood and lymphatic system disorders</i></b>						
Anemia*	98	11	<1	92	6	<1
Neutropenia*	91	20	62	89	31	42
Febrile neutropenia	19	13	6	8	6	2
<b><i>Gastrointestinal disorders</i></b>						
Constipation	42	2	-	37	<1	<1
Vomiting	33	3	-	28	1	-
Diarrhea	27	3	<1	18	<1	-
Stomatitis	21	2	-	16	<1	-
Abdominal pain	21	3	-	10	<1	-
<b><i>Nervous system disorders</i></b>						
Peripheral sensory neuropathy	65	10	<1	41	2	-
Peripheral motor neuropathy	11	2	-	4	<1	-
<b><i>General disorders and administration site conditions</i></b>						
Pyrexia	27	3	<1	22	2	-
<b><i>Musculoskeletal and connective tissue disorders</i></b>						
Bone pain	19	<1	-	10	<1	-
Back pain	13	<1	-	7	-	-
<b><i>Skin and subcutaneous tissue disorders</i></b>						
Rashes, eruptions and exanthems <sup>a</sup>	13	<1	<1	8	<1	-
<b><i>Respiratory, thoracic and mediastinal disorders</i></b>						
Dyspnea	12	1	-	19	2	-

	ADCETRIS + AVD Total N = 662 % of patients			ABVD Total N = 659 % of patients		
Adverse Reaction	Any Grade	Grade 3	Grade 4	Any Grade	Grade 3	Grade 4
<b>Investigations</b>						
Decreased weight	22	<1	-	6	<1	-
Increased alanine aminotransferase	10	3	-	4	<1	-
<b>Metabolism and nutrition disorders</b>						
Decreased appetite	18	<1	-	12	<1	-
<b>Psychiatric disorders</b>						
Insomnia	19	<1	-	12	<1	-

\* Derived from laboratory values and adverse reaction data; data are included for clinical relevance irrespective of rate between arms

<sup>a</sup> Grouped term includes rash maculo-papular, rash macular, rash, rash papular, rash generalized, and rash vesicular.

AVD = doxorubicin, vinblastine, and dacarbazine

ABVD = doxorubicin, bleomycin, vinblastine, and dacarbazine

Events were graded using the NCI CTCAE Version 4.03

Events listed are those having a ≥5% difference in rate between treatment arms

### Classical Hodgkin Lymphoma Post-Auto-HSCT Consolidation (Study 3: AETHERA)

ADCETRIS was studied in 329 patients with cHL at high risk of relapse or progression post-auto-HSCT in a randomized, double-blind, placebo-controlled clinical trial in which the recommended starting dose and schedule was 1.8 mg/kg of ADCETRIS administered intravenously over 30 minutes every 3 weeks or placebo for up to 16 cycles. Of the 329 enrolled patients, 327 (167 ADCETRIS, 160 placebo) received at least one dose of study treatment. The median number of treatment cycles in each study arm was 15 (range, 1–16) and 80 patients (48%) in the ADCETRIS-treatment arm received 16 cycles [see *Clinical Studies (14.1)*].

Standard international guidelines were followed for infection prophylaxis for herpes simplex virus (HSV), varicella-zoster virus (VZV), and *Pneumocystis jiroveci* pneumonia (PJP) post-auto-HSCT. Overall, 312 patients (95%) received HSV and VZV prophylaxis with a median duration of 11.1 months (range, 0–20) and 319 patients (98%) received PJP prophylaxis with a median duration of 6.5 months (range, 0–20).

Adverse reactions that led to dose delays in more than 5% of ADCETRIS-treated patients were neutropenia (22%), peripheral sensory neuropathy (16%), upper respiratory tract infection (6%), and peripheral motor neuropathy (6%) [see *Dosage and Administration (2.3)*]. Adverse reactions led to treatment discontinuation in 32% of ADCETRIS-treated patients. Adverse reactions that led to treatment discontinuation in 2 or more patients were peripheral sensory neuropathy (14%), peripheral motor neuropathy (7%), acute respiratory distress syndrome (1%), paresthesia (1%), and vomiting (1%). Serious adverse reactions were reported in 25% of ADCETRIS-treated patients. The most common serious adverse reactions were pneumonia (4%), pyrexia (4%), vomiting (3%), nausea (2%), hepatotoxicity (2%), and peripheral sensory neuropathy (2%).

**Table 5: Adverse Reactions Reported in ≥10% in ADCETRIS-Treated Patients with Classical Hodgkin Lymphoma Post-Auto-HSCT Consolidation (Study 3: AETHERA)**

Adverse Reaction	ADCETRIS Total N = 167 % of patients			Placebo Total N = 160 % of patients		
	Any Grade	Grade 3	Grade 4	Any Grade	Grade 3	Grade 4
<b><i>Blood and lymphatic system disorders</i></b>						
Neutropenia*	78	30	9	34	6	4
Thrombocytopenia*	41	2	4	20	3	2
Anemia*	27	4	-	19	2	-
<b><i>Nervous system disorders</i></b>						
Peripheral sensory neuropathy	56	10	-	16	1	-
Peripheral motor neuropathy	23	6	-	2	1	-
Headache	11	2	-	8	1	-
<b><i>Infections and infestations</i></b>						
Upper respiratory tract infection	26	-	-	23	1	-
<b><i>General disorders and administration site conditions</i></b>						
Fatigue	24	2	-	18	3	-
Pyrexia	19	2	-	16	-	-
Chills	10	-	-	5	-	-
<b><i>Gastrointestinal disorders</i></b>						
Nausea	22	3	-	8	-	-
Diarrhea	20	2	-	10	1	-
Vomiting	16	2	-	7	-	-
Abdominal pain	14	2	-	3	-	-
Constipation	13	2	-	3	-	-
<b><i>Respiratory, thoracic and mediastinal disorders</i></b>						
Cough	21	-	-	16	-	-
Dyspnea	13	-	-	6	-	1
<b><i>Investigations</i></b>						
Weight decreased	19	1	-	6	-	-
<b><i>Musculoskeletal and connective tissue disorders</i></b>						
Arthralgia	18	1	-	9	-	-
Muscle spasms	11	-	-	6	-	-
Myalgia	11	1	-	4	-	-
<b><i>Skin and subcutaneous tissue disorders</i></b>						
Pruritus	12	1	-	8	-	-
<b><i>Metabolism and nutrition disorders</i></b>						
Decreased appetite	12	1	-	6	-	-

\*Derived from laboratory values and adverse reaction data

Events were graded using the NCI CTCAE Version 4

### **Relapsed Classical Hodgkin Lymphoma (Study 1)**

ADCETRIS was studied in 102 patients with cHL in a single arm clinical trial in which the recommended starting dose and schedule was 1.8 mg/kg intravenously every 3 weeks. Median duration of treatment was 9 cycles (range, 1–16) [see *Clinical Studies (14.1)*].

Adverse reactions that led to dose delays in more than 5% of ADCETRIS-treated patients were neutropenia (16%) and peripheral sensory neuropathy (13%) [see *Dosage and Administration (2.3)*]. Adverse reactions led to treatment discontinuation in 20% of ADCETRIS-treated patients. Adverse reactions that led to treatment discontinuation in 2 or more patients were peripheral sensory neuropathy (6%) and peripheral motor neuropathy (3%). Serious adverse reactions were reported in 25% of ADCETRIS-treated patients. The most common serious adverse reactions were peripheral motor neuropathy (4%), abdominal pain (3%), pulmonary embolism (2%), pneumonitis (2%), pneumothorax (2%), pyelonephritis (2%), and pyrexia (2%).

**Table 6: Adverse Reactions Reported in ≥10% of Patients with Relapsed Classical Hodgkin Lymphoma (Study 1)**

Adverse Reaction	cHL Total N = 102 % of patients		
	Any Grade	Grade 3	Grade 4
<b><i>Blood and lymphatic system disorders</i></b>			
Neutropenia*	54	15	6
Anemia*	33	8	2
Thrombocytopenia*	28	7	2
Lymphadenopathy	11	-	-
<b><i>Nervous system disorders</i></b>			
Peripheral sensory neuropathy	52	8	-
Peripheral motor neuropathy	16	4	-
Headache	19	-	-
Dizziness	11	-	-
<b><i>General disorders and administration site conditions</i></b>			
Fatigue	49	3	-
Pyrexia	29	2	-
Chills	13	-	-
<b><i>Infections and infestations</i></b>			
Upper respiratory tract infection	47	-	-
<b><i>Gastrointestinal disorders</i></b>			
Nausea	42	-	-
Diarrhea	36	1	-
Abdominal pain	25	2	1
Vomiting	22	-	-
Constipation	16	-	-



Adverse Reaction	cHL Total N = 102 % of patients		
	Any Grade	Grade 3	Grade 4
<b><i>Skin and subcutaneous tissue disorders</i></b>			
Rash	27	-	-
Pruritus	17	-	-
Alopecia	13	-	-
Night sweats	12	-	-
<b><i>Respiratory, thoracic and mediastinal disorders</i></b>			
Cough	25	-	-
Dyspnea	13	1	-
Oropharyngeal pain	11	-	-
<b><i>Musculoskeletal and connective tissue disorders</i></b>			
Arthralgia	19	-	-
Myalgia	17	-	-
Back pain	14	-	-
Pain in extremity	10	-	-
<b><i>Psychiatric disorders</i></b>			
Insomnia	14	-	-
Anxiety	11	2	-
<b><i>Metabolism and nutrition disorders</i></b>			
Decreased appetite	11	-	-

\*Derived from laboratory values and adverse reaction data  
Events were graded using the NCI CTCAE Version 3.0

### ***Previously Untreated Systemic Anaplastic Large Cell Lymphoma or Other CD30-Expressing Peripheral T-Cell Lymphomas (Study 6, ECHELON-2)***

ADCETRIS in combination with CHP was evaluated in patients with previously untreated, CD30-expressing PTCL in a multicenter randomized, double-blind, double dummy, actively controlled trial. Patients were randomized to receive ADCETRIS + CHP or CHOP for 6 to 8, 21-day cycles. ADCETRIS was administered on Day 1 of each cycle, with a starting dose of 1.8 mg/kg intravenously over 30 minutes, approximately 1 hour after completion of CHP [see *Clinical Studies (14.2)*]. The trial required hepatic transaminases  $\leq 3$  times upper limit of normal (ULN), total bilirubin  $\leq 1.5$  times ULN, and serum creatinine  $\leq 2$  times ULN and excluded patients with Grade 2 or higher peripheral neuropathy.

A total of 449 patients were treated (223 with ADCETRIS + CHP, 226 with CHOP), with 6 cycles planned in 81%. In the ADCETRIS + CHP arm, 70% of patients received 6 cycles, and 18% received 8 cycles. Primary prophylaxis with G-CSF was administered to 34% of ADCETRIS + CHP-treated patients and 27% of CHOP-treated patients.

Fatal adverse reactions occurred in 3% of patients in the A+CHP arm and in 4% of patients in the CHOP arms, most often from infection. Serious adverse reactions were reported in 38% of ADCETRIS + CHP- treated patients and 35% of CHOP-treated patients. Serious adverse reactions occurring in >2% of ADCETRIS + CHP-treated patients included febrile neutropenia (14%), pneumonia (5%), pyrexia (4%), and sepsis (3%).

The most common adverse reactions observed  $\geq 2\%$  more in recipients of ADCETRIS + CHP were nausea, diarrhea, fatigue or asthenia, mucositis, pyrexia, vomiting, and anemia. Other common ( $\geq 10\%$ ) adverse reactions observed  $\geq 2\%$  more with ADCETRIS + CHP were febrile neutropenia, abdominal pain, decreased appetite, dyspnea, edema, cough, dizziness, hypokalemia, decreased weight, and myalgia.

In recipients of ADCETRIS + CHP, adverse reactions led to dose delays of ADCETRIS in 25% of patients, dose reduction in 9% (most often for peripheral neuropathy), and discontinuation of ADCETRIS with or without the other components in 7% (most often from peripheral neuropathy and infection).

**Table 7: Adverse Reactions Reported in  $\geq 10\%$  of ADCETRIS + CHP-treated Patients with Previously Untreated, CD30-Expressing PTCL (Study 6: ECHELON-2)**

Adverse Reaction	ADCETRIS + CHP Total N = 223 % of patients			CHOP Total N = 226 % of patients		
	Any Grade	Grade 3	Grade 4	Any Grade	Grade 3	Grade 4
<b><i>Blood and lymphatic system disorders</i></b>						
Anemia*	66	13	<1	59	12	<1
Neutropenia*	59	17	22	58	14	22
Lymphopenia*	51	18	1	57	19	2
Febrile neutropenia	19	17	2	16	12	4
Thrombocytopenia*	17	3	3	13	3	2
<b><i>Gastrointestinal disorders</i></b>						
Nausea	46	2	-	39	2	-
Diarrhea	38	6	-	20	<1	-
Mucositis	30	2	<1	27	3	-
Constipation	29	<1	<1	30	1	-
Vomiting	26	<1	-	17	2	-
Abdominal pain	17	1	-	13	<1	-
<b><i>Nervous system disorders</i></b>						
Peripheral neuropathy	52	3	<1	55	4	-
Headache	15	<1	-	15	<1	-
Dizziness	13	-	-	9	<1	-
<b><i>General disorders and administration site conditions</i></b>						
Fatigue or asthenia	35	2	-	29	2	-
Pyrexia	26	1	<1	19	-	-
Edema	15	<1	-	12	<1	-

Adverse Reaction	ADCETRIS + CHP Total N = 223 % of patients			CHOP Total N = 226 % of patients		
	Any Grade	Grade 3	Grade 4	Any Grade	Grade 3	Grade 4
<b>Infections and infestations</b>						
Upper respiratory tract infection	14	<1	-	15	<1	-
<b>Skin and subcutaneous disorders</b>						
Alopecia	26	-	-	25	1	-
Rash	16	1	<1	14	1	-
<b>Musculoskeletal and connective tissue disorders</b>						
Myalgia	11	-	-	8	-	-
<b>Respiratory, thoracic and mediastinal disorders</b>						
Dyspnea	15	2	-	11	2	-
Cough	13	<1	-	10	-	-
<b>Metabolism and nutrition disorders</b>						
Decreased appetite	17	1	-	12	1	-
Hypokalemia	12	4	-	8	<1	<1
<b>Investigations</b>						
Weight decreased	12	<1	-	8	<1	-
<b>Psychiatric disorders</b>						
Insomnia	11	-	-	14	-	-

\* Derived from laboratory values and adverse reaction data. Laboratory values were obtained at the start of each cycle and end of treatment.

The table includes a combination of grouped and ungrouped terms. CHP = cyclophosphamide, doxorubicin, and prednisone; CHOP = cyclophosphamide, doxorubicin, vincristine, and prednisone

Events were graded using the NCI CTCAE Version 4.03

### **Relapsed Systemic Anaplastic Large Cell Lymphoma (Study 2)**

ADCETRIS was studied in 58 patients with sALCL in a single arm clinical trial in which the recommended starting dose and schedule was 1.8 mg/kg intravenously every 3 weeks. Median duration of treatment was 7 cycles (range, 1–16) [see *Clinical Studies (14.2)*].

Adverse reactions that led to dose delays in more than 5% of ADCETRIS-treated patients were neutropenia (12%) and peripheral sensory neuropathy (7%) [see *Dosage and Administration (2.3)*]. Adverse reactions led to treatment discontinuation in 19% of ADCETRIS-treated patients. The adverse reaction that led to treatment discontinuation in 2 or more patients was peripheral sensory neuropathy (5%). Serious adverse reactions were reported in 41% of ADCETRIS-treated patients. The most common serious adverse reactions were septic shock (3%), supraventricular arrhythmia (3%), pain in extremity (3%), and urinary tract infection (3%).

**Table 8: Adverse Reactions Reported in ≥10% of Patients with Relapsed Systemic Anaplastic Large Cell Lymphoma (Study 2)**

Adverse Reaction	sALCL Total N = 58 % of patients		
	Any Grade	Grade 3	Grade 4
<b><i>Blood and lymphatic system disorders</i></b>			
Neutropenia*	55	12	9
Anemia*	52	2	-
Thrombocytopenia*	16	5	5
Lymphadenopathy	10	-	-
<b><i>Nervous system disorders</i></b>			
Peripheral sensory neuropathy	53	10	-
Headache	16	2	-
Dizziness	16	-	-
<b><i>General disorders and administration site conditions</i></b>			
Fatigue	41	2	2
Pyrexia	38	2	-
Chills	12	-	-
Pain	28	-	5
Edema peripheral	16	-	-
<b><i>Infections and infestations</i></b>			
Upper respiratory tract infection	12	-	-
<b><i>Gastrointestinal disorders</i></b>			
Nausea	38	2	-
Diarrhea	29	3	-
Vomiting	17	3	-
Constipation	19	2	-
<b><i>Skin and subcutaneous tissue disorders</i></b>			
Rash	31	-	-
Pruritus	19	-	-
Alopecia	14	-	-
Dry skin	10	-	-
<b><i>Respiratory, thoracic and mediastinal disorders</i></b>			
Cough	17	-	-
Dyspnea	19	2	-
<b><i>Musculoskeletal and connective tissue disorders</i></b>			
Myalgia	16	2	-
Back pain	10	2	-
Pain in extremity	10	2	2
Muscle spasms	10	2	-

Adverse Reaction	sALCL Total N = 58 % of patients		
	Any Grade	Grade 3	Grade 4
<b>Psychiatric disorders</b>			
Insomnia	16	-	-
<b>Metabolism and nutrition disorders</b>			
Decreased appetite	16	2	-
<b>Investigations</b>			
Weight decreased	12	3	-

\*Derived from laboratory values and adverse reaction data  
Events were graded using the NCI CTCAE Version 3.0

### **Primary Cutaneous Anaplastic Large Cell Lymphoma and CD30-Expressing Mycosis Fungoides (Study 4: ALCANZA)**

ADCETRIS was studied in 131 patients with pcALCL or CD30-expressing MF requiring systemic therapy in a randomized, open-label, multicenter clinical trial in which the recommended starting dose and schedule was ADCETRIS 1.8 mg/kg intravenously over 30 minutes every 3 weeks or physician's choice of either methotrexate 5 to 50 mg orally weekly or bexarotene 300 mg/m<sup>2</sup> orally daily.

Of the 131 enrolled patients, 128 (66 brentuximab vedotin, 62 physician's choice) received at least one dose of study treatment. The median number of treatment cycles in the ADCETRIS treatment arm was 12 (range, 1–16) compared to 3 (range, 1–16) and 6 (range, 1–16) in the methotrexate and bexarotene arms, respectively. Twenty-four (24) patients (36%) in the ADCETRIS-treatment arm received 16 cycles compared to 5 patients (8%) in the physician's choice arm [see *Clinical Studies (14.2)*].

Adverse reactions that led to dose delays in more than 5% of ADCETRIS-treated patients were peripheral sensory neuropathy (15%) and neutropenia (6%) [see *Dosage and Administration (2.3)*]. Adverse reactions led to treatment discontinuation in 24% of ADCETRIS-treated patients. The most common adverse reaction that led to treatment discontinuation was peripheral neuropathy (12%). Serious adverse reactions were reported in 29% of ADCETRIS-treated patients. The most common serious adverse reactions were cellulitis (3%) and pyrexia (3%).

**Table 9: Adverse Reactions Reported in ≥10% ADCETRIS-Treated Patients with pcALCL or CD30-Expressing MF (Study 4: ALCANZA)**

Adverse Reaction	ADCETRIS Total N = 66 % of patients			Physician's Choice <sup>a</sup> Total N = 62 % of patients		
	Any Grade	Grade 3	Grade 4	Any Grade	Grade 3	Grade 4
<b>Blood and lymphatic system disorders</b>						
Anemia*	62	-	-	65	5	-

	ADCETRIS Total N = 66 % of patients			Physician's Choice <sup>a</sup> Total N = 62 % of patients		
	Any Grade	Grade 3	Grade 4	Any Grade	Grade 3	Grade 4
<b>Adverse Reaction</b>						
Neutropenia*	21	3	2	24	5	-
Thrombocytopenia*	15	2	2	2	-	-
<b><i>Nervous system disorders</i></b>						
Peripheral sensory neuropathy	45	5	-	2	-	-
<b><i>Gastrointestinal disorders</i></b>						
Nausea	36	2	-	13	-	-
Diarrhea	29	3	-	6	-	-
Vomiting	17	2	-	5	-	-
<b><i>General disorders and administration site conditions</i></b>						
Fatigue	29	5	-	27	2	-
Pyrexia	17	-	-	18	2	-
Edema peripheral	11	-	-	10	-	-
Asthenia	11	2	-	8	-	2
<b><i>Skin and subcutaneous tissue disorders</i></b>						
Pruritus	17	2	-	13	3	-
Alopecia	15	-	-	3	-	-
Rash maculo-papular	11	2	-	5	-	-
Pruritus generalized	11	2	-	2	-	-
<b><i>Metabolism and nutrition disorders</i></b>						
Decreased appetite	15	-	-	5	-	-
<b><i>Musculoskeletal and connective tissue disorders</i></b>						
Arthralgia	12	-	-	6	-	-
Myalgia	12	-	-	3	-	-
<b><i>Respiratory, thoracic and mediastinal disorders</i></b>						
Dyspnea	11	-	-	-	-	-

\*Derived from laboratory values and adverse reaction data

<sup>a</sup> Physician's choice of either methotrexate or bexarotene

Events were graded using the NCI CTCAE Version 4.03

## Additional Important Adverse Reactions

### *Infusion reactions*

In studies of ADCETRIS as monotherapy (Studies 1–4), 13% of ADCETRIS-treated patients experienced infusion-related reactions. The most common adverse reactions in Studies 1-4 ( $\geq 3\%$  in any study) associated with infusion-related reactions were chills (4%), nausea (3–4%), dyspnea (2–3%), pruritus (2–5%), pyrexia (2%), and cough (2%). Grade 3 events were reported in 5 of the 51 ADCETRIS-treated patients who experienced infusion-related reactions.

In a study of ADCETRIS in combination with AVD (Study 5, ECHELON-1), infusion-related reactions were reported in 57 patients (9%) in the ADCETRIS + AVD-treated arm. Grade 3

events were reported in 3 of the 57 patients treated with ADCETRIS + AVD who experienced infusion-related reactions. The most common adverse reaction ( $\geq 2\%$ ) associated with infusion-related reactions was nausea (2%).

In a study of ADCETRIS in combination with CHP (Study 6, ECHELON-2), infusion-related reactions were reported in 10 patients (4%) in the ADCETRIS + CHP-treated arm: 2 (1%) patients with events that were Grade 3 or higher events, and 8 (4%) patients with events that were less than Grade 3.

#### *Pulmonary toxicity*

In a trial in patients with cHL that studied ADCETRIS with bleomycin as part of a combination regimen, the rate of non-infectious pulmonary toxicity was higher than the historical incidence reported with ABVD (doxorubicin, bleomycin, vinblastine, dacarbazine). Patients typically reported cough and dyspnea. Interstitial infiltration and/or inflammation were observed on radiographs and computed tomographic imaging of the chest. Most patients responded to corticosteroids. The concomitant use of ADCETRIS with bleomycin is contraindicated [see *Contraindications (4)*].

In a study of ADCETRIS in combination with AVD (Study 5, ECHELON-1), non-infectious pulmonary toxicity events were reported in 12 patients (2%) in the ADCETRIS + AVD arm. These events included lung infiltration (6 patients) and pneumonitis (6 patients), or interstitial lung disease (1 patient).

In a study of ADCETRIS in combination with CHP (Study 6, ECHELON-2), non-infectious pulmonary toxicity events were reported in 5 patients (2%) in the ADCETRIS + CHP arm; all 5 events were pneumonitis.

Cases of pulmonary toxicity have also been reported in patients receiving ADCETRIS monotherapy. In Study 3 (AETHERA), pulmonary toxicity was reported in 8 patients (5%) in the ADCETRIS-treated arm and 5 patients (3%) in the placebo arm.

## **6.2 Post Marketing Experience**

The following adverse reactions have been identified during post-approval use of ADCETRIS. Because these reactions are reported voluntarily from a population of uncertain size, it is not always possible to reliably estimate their frequency or establish a causal relationship to drug exposure.

*Blood and lymphatic system disorders:* febrile neutropenia [see *Warnings and Precautions (5.3)*].

*Gastrointestinal disorders:* acute pancreatitis and gastrointestinal complications (including fatal outcomes) [see *Warnings and Precautions (5.12)*].

*Hepatobiliary disorders:* hepatotoxicity [see *Warnings and Precautions (5.8)*].

*Infections:* PML [see *Boxed Warning, Warnings and Precautions (5.9)*], serious infections and opportunistic infections [see *Warnings and Precautions (5.4)*].

*Metabolism and nutrition disorders:* hyperglycemia.

*Respiratory, thoracic and mediastinal disorders:* noninfectious pulmonary toxicity including pneumonitis, interstitial lung disease, and ARDS (some with fatal outcomes) [see *Warnings and Precautions (5.10) and Adverse Reactions (6.1)*].

*Skin and subcutaneous tissue disorders:* Toxic epidermal necrolysis, including fatal outcomes [see *Warnings and Precautions (5.11)*].

### **6.3 Immunogenicity**

As with all therapeutic proteins, there is potential for immunogenicity. The detection of antibody formation is highly dependent on the sensitivity and specificity of the assay. Additionally, the observed incidence of antibody (including neutralizing antibody) positivity in an assay may be influenced by several factors including assay methodology, sample handling, timing of sample collection, concomitant medications, and underlying disease. For these reasons, comparison of the incidence of antibodies to ADCETRIS in the studies described below with the incidence of antibodies in other studies or to other products may be misleading.

Patients with cHL and sALCL in Studies 1 and 2 [see *Clinical Studies (14.1, 14.2)*] were tested for antibodies to brentuximab vedotin every 3 weeks using a sensitive electrochemiluminescence immunoassay. Approximately 7% of patients in these trials developed persistently positive antibodies (positive test at more than 2 time points) and 30% developed transiently positive antibodies (positive at 1 or 2 post-baseline time points). The anti-brentuximab antibodies were directed against the antibody component of brentuximab vedotin in all patients with transiently or persistently positive antibodies. Two of the patients (1%) with persistently positive antibodies experienced adverse reactions consistent with infusion reactions that led to discontinuation of treatment. Overall, a higher incidence of infusion related reactions was observed in patients who developed persistently positive antibodies.

A total of 58 patient samples that were either transiently or persistently positive for anti-brentuximab vedotin antibodies were tested for the presence of neutralizing antibodies. Sixty-two percent (62%) of these patients had at least one sample that was positive for the presence of neutralizing antibodies. The effect of anti-brentuximab vedotin antibodies on safety and efficacy is not known.

## **7 DRUG INTERACTIONS**

### **7.1 Effect of Other Drugs on ADCETRIS**

**CYP3A4 Inhibitors:** Co-administration of ADCETRIS with ketoconazole, a potent CYP3A4 inhibitor, increased exposure to MMAE [see *Clinical Pharmacology (12.3)*], which may increase the risk of adverse reaction. Closely monitor adverse reactions when ADCETRIS is given concomitantly with strong CYP3A4 inhibitors.



## 8 USE IN SPECIFIC POPULATIONS

### 8.1 Pregnancy

#### *Risk Summary*

ADCETRIS can cause fetal harm based on the findings from animal studies and the drug's mechanism of action [see *Clinical Pharmacology (12.1)*]. In animal reproduction studies, administration of brentuximab vedotin to pregnant rats during organogenesis at doses similar to the clinical dose of 1.8 mg/kg every three weeks caused embryo-fetal toxicities, including congenital malformations (see *Data*). The available data from case reports on ADCETRIS use in pregnant women are insufficient to inform a drug-associated risk of adverse developmental outcomes. Advise a pregnant woman of the potential risk to a fetus.

The estimated background risk of major birth defects and miscarriage for the indicated population is unknown. All pregnancies have a background risk of birth defect, loss, or other adverse outcomes. In the U.S. general population, the estimated background risk of major birth defects and miscarriage in clinically recognized pregnancies is 2–4% and 15–20%, respectively.

#### *Data*

#### Animal Data

In an embryo-fetal developmental study, pregnant rats received 2 intravenous doses of 0.3, 1, 3, or 10 mg/kg brentuximab vedotin during the period of organogenesis (once each on Pregnancy Days 6 and 13). Drug-induced embryo-fetal toxicities were seen mainly in animals treated with 3 and 10 mg/kg of the drug and included increased early resorption ( $\geq 99\%$ ), post-implantation loss ( $\geq 99\%$ ), decreased numbers of live fetuses, and external malformations (i.e., umbilical hernias and malrotated hindlimbs). Systemic exposure in animals at the brentuximab vedotin dose of 3 mg/kg is approximately the same exposure in patients with cHL or sALCL who received the recommended dose of 1.8 mg/kg every three weeks.

### 8.2 Lactation

#### *Risk Summary*

There is no information regarding the presence of brentuximab vedotin in human milk, the effects on the breastfed child, or the effects on milk production. Because of the potential for serious adverse reactions in a breastfed child from ADCETRIS, including cytopenias and neurologic or gastrointestinal toxicities, advise patients that breastfeeding is not recommended during ADCETRIS treatment.

### 8.3 Females and Males of Reproductive Potential

ADCETRIS can cause fetal harm based on the findings from animal studies and the drug's mechanism of action [see *Use in Specific Populations (8.1)*, *Clinical Pharmacology (12.1)*].

### *Pregnancy Testing*

Verify the pregnancy status of females of reproductive potential prior to initiating ADCETRIS therapy.

### *Contraception*

#### Females

Advise females of reproductive potential to avoid pregnancy during ADCETRIS treatment and for at least 6 months after the final dose of ADCETRIS. Advise females to immediately report pregnancy [see *Use in Specific Populations (8.1)*].

#### Males

ADCETRIS may damage spermatozoa and testicular tissue, resulting in possible genetic abnormalities. Males with female sexual partners of reproductive potential should use effective contraception during ADCETRIS treatment and for at least 6 months after the final dose of ADCETRIS [see *Nonclinical Toxicology (13.1)*].

### *Infertility*

#### Males

Based on findings in rats, male fertility may be compromised by treatment with ADCETRIS [see *Nonclinical Toxicology (13.1)*].

## **8.4 Pediatric Use**

Safety and effectiveness of ADCETRIS have not been established in pediatric patients.

## **8.5 Geriatric Use**

In the clinical trial of ADCETRIS in combination with AVD for patients with previously untreated Stage III or IV cHL (Study 5: ECHELON-1), 9% of ADCETRIS + AVD-treated patients were age 65 or older. Older age was a risk factor for febrile neutropenia, occurring in 39% of patients who were age 65 or older versus 17% of patients less than age 65, who received ADCETRIS + AVD [see *Dosage and Administration (2.3)*]. The ECHELON-1 trial did not contain sufficient information on patients age 65 and older to determine whether they respond differently from younger patients. [see *Clinical Studies (14.1)*].

In the clinical trial of ADCETRIS in combination with CHP for patients with previously untreated, CD30-expressing PTCL (Study 6: ECHELON-2), 31% of ADCETRIS + CHP-treated patients were age 65 or older. Among older patients, 74% had adverse reactions  $\geq$  Grade 3 and 49% had serious adverse reactions. Among patients younger than age 65, 62% had adverse reactions  $\geq$  Grade 3 and 33% had serious adverse reactions. Older age was a risk factor for febrile neutropenia, occurring in 29% of patients who were age 65 or older versus 14% of patients less than age 65.

Other clinical trials of ADCETRIS in cHL (Study 1; Study 3: AETHERA) and sALCL (Study 2) did not include sufficient numbers of patients who were age 65 and older to determine whether they respond differently from younger patients.

In the clinical trial of ADCETRIS in pcALCL or CD30-expressing MF (Study 4: ALCANZA), 42% of ADCETRIS-treated patients were age 65 or older. No meaningful differences in safety or efficacy were observed between these patients and younger patients.

### 8.6 Renal Impairment

Avoid the use of ADCETRIS in patients with severe renal impairment (CrCL <30 mL/min) [see *Warnings and Precautions (5.6) and Clinical Pharmacology (12.3)*]. No dosage adjustment is required for mild (CrCL >50–80 mL/min) or moderate (CrCL 30–50 mL/min) renal impairment.

### 8.7 Hepatic Impairment

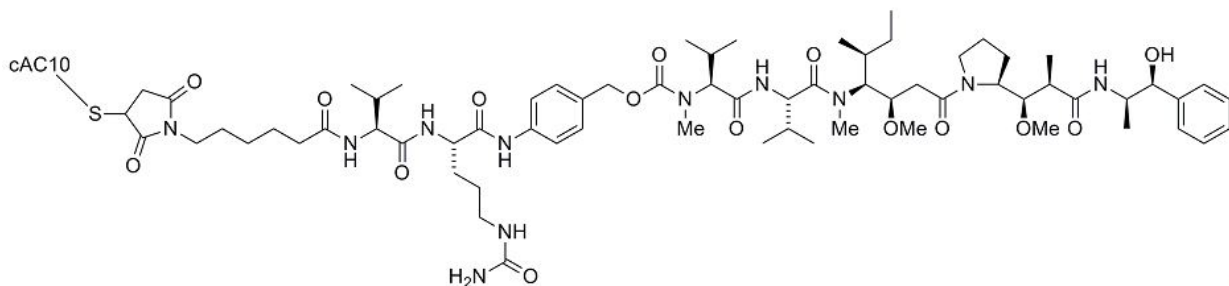
Avoid the use of ADCETRIS in patients with moderate (Child-Pugh B) or severe (Child-Pugh C) hepatic impairment [see *Warnings and Precautions (5.7) and Clinical Pharmacology (12.3)*]. Dosage reduction is required in patients with mild (Child-Pugh A) hepatic impairment [see *Dosage and Administration (2.1)*].

## 10 OVERDOSAGE

There is no known antidote for overdosage of ADCETRIS. In case of overdosage, the patient should be closely monitored for adverse reactions, particularly neutropenia, and supportive treatment should be administered.

## 11 DESCRIPTION

ADCETRIS (brentuximab vedotin) is a CD30-directed antibody-drug conjugate (ADC) consisting of three components: 1) the chimeric IgG1 antibody cAC10, specific for human CD30, 2) the microtubule disrupting agent MMAE, and 3) a protease-cleavable linker that covalently attaches MMAE to cAC10.



Brentuximab vedotin has an approximate molecular weight of 153 kDa. Approximately 4 molecules of MMAE are attached to each antibody molecule. Brentuximab vedotin is produced by chemical conjugation of the antibody and small molecule components. The antibody is produced by mammalian (Chinese hamster ovary) cells, and the small molecule components are produced by chemical synthesis.

ADCETRIS (brentuximab vedotin) for Injection is supplied as a sterile, white to off-white, preservative-free lyophilized cake or powder in single-dose vials. Following reconstitution with 10.5 mL Sterile Water for Injection, USP, a solution containing 5 mg/mL brentuximab vedotin is produced. The reconstituted product contains 70 mg/mL trehalose dihydrate, 5.6 mg/mL sodium citrate dihydrate, 0.21 mg/mL citric acid monohydrate, and 0.20 mg/mL polysorbate 80 and water for injection. The pH is approximately 6.6.

## **12 CLINICAL PHARMACOLOGY**

### **12.1 Mechanism of Action**

CD30 is a member of the tumor necrosis factor receptor family and is expressed on the surface of sALCL cells and on Hodgkin Reed-Sternberg (HRS) cells in cHL. CD30 is variably expressed in other T-cell lymphomas. Expression of CD30 on healthy tissue and cells is limited. In vitro data suggest that signaling through CD30-CD30L binding may affect cell survival and proliferation.

Brentuximab vedotin is an ADC. The antibody is a chimeric IgG1 directed against CD30. The small molecule, MMAE, is a microtubule-disrupting agent. MMAE is covalently attached to the antibody via a linker. Nonclinical data suggest that the anticancer activity of ADCETRIS is due to the binding of the ADC to CD30-expressing cells, followed by internalization of the ADC-CD30 complex, and the release of MMAE via proteolytic cleavage. Binding of MMAE to tubulin disrupts the microtubule network within the cell, subsequently inducing cell cycle arrest and apoptotic death of the cells. Additionally, in vitro data provide evidence for antibody-dependent cellular phagocytosis (ADCP).

### **12.2 Pharmacodynamics**

#### *Cardiac Electrophysiology*

At the recommended dose of 1.8 mg/kg, brentuximab vedotin had no large QTc prolongation (>10ms).

### **12.3 Pharmacokinetics**

The pharmacokinetics of brentuximab vedotin were evaluated in monotherapy and combination chemotherapy in patients with hematological malignancies. The pharmacokinetics of brentuximab vedotin in combination therapy were similar to those in monotherapy. Total antibody and ADC had similar pharmacokinetic profiles. The pharmacokinetics of the ADC and MMAE are presented.

#### ADC

Maximum concentrations of ADC were observed near the end of infusion. Exposures were approximately dose proportional from 1.2 to 2.7 mg/kg (1.5 times the highest approved recommended dosage).

- 1.8 mg/kg Q3W: Steady state was achieved within 21 days, and minimal to no accumulation of ADC was observed.

- 1.2 mg/kg Q2W: Steady state was achieved within 56 days, 1.27-fold accumulation (14-day AUC) was observed.

## MMAE

Maximum concentrations of MMAE were observed approximately 1 to 3 days after end of infusion. Exposures decreased with continued administration of ADCETRIS with approximately 50% to 80% of the exposure of the first dose observed at subsequent doses.

- 1.8 mg/kg Q3W: Steady state was achieved within 21 days.
- 1.2 mg/kg Q2W: Steady state was achieved within 56 days.

### *Distribution*

In humans, the mean steady state volume of distribution was approximately 6–10 L for ADC.

In vitro, the binding of MMAE to human plasma proteins ranged from 68–82%. MMAE is not likely to displace or to be displaced by highly protein-bound drugs.

### *Elimination*

ADC elimination exhibited a multi-exponential decline with a  $t_{1/2}$  of approximately 4 to 6 days.

MMAE elimination exhibited a mono-exponential decline with a  $t_{1/2}$  of approximately 3 to 4 days. Elimination of MMAE appeared to be limited by its rate of release from ADC.

### Metabolism

A small fraction of MMAE released from brentuximab vedotin is metabolized. In vitro data indicate that the MMAE metabolism that occurs is primarily via oxidation by CYP3A4/5.

### Excretion

After a single dose of 1.8 mg/kg of ADCETRIS in patients, approximately 24% of the total MMAE administered was recovered in both urine and feces over a 1-week period, approximately 72% of which was recovered in the feces, and the majority was excreted unchanged.

### *Specific Populations*

Gender, age, and race do not have a meaningful effect on the pharmacokinetics of brentuximab vedotin.

### Renal Impairment

The pharmacokinetics of brentuximab vedotin and MMAE were evaluated after the administration of 1.2 mg/kg of ADCETRIS to patients with mild ( $\text{CrCL} >50\text{--}80$  mL/min;  $n=4$ ), moderate ( $\text{CrCL} 30\text{--}50$  mL/min;  $n=3$ ) and severe ( $\text{CrCL} <30$  mL/min;  $n=3$ ) renal impairment. The AUC of MMAE was approximately 2-fold higher in patients with severe renal impairment compared to patients with normal renal function and not meaningfully altered in patients with mild or moderate renal impairment.

### Hepatic Impairment

The pharmacokinetics of brentuximab vedotin and MMAE were evaluated after the administration of 1.2 mg/kg of ADCETRIS to patients with mild (Child-Pugh A; n=1), moderate (Child-Pugh B; n=5) and severe (Child-Pugh C; n=1) hepatic impairment. The AUC of MMAE was approximately 2.3-fold higher in patients with hepatic impairment compared to patients with normal hepatic function.

### *Drug Interaction Studies*

#### Effects of Other Drugs on ADCETRIS

Co-administration of ADCETRIS with ketoconazole, a potent CYP3A4 inhibitor, increased exposure to MMAE by approximately 34%.

Co-administration of ADCETRIS with rifampin, a potent CYP3A4 inducer, reduced exposure to MMAE by approximately 46%.

#### Effects of ADCETRIS on Other Drugs

Co-administration of ADCETRIS did not affect exposure to midazolam, a CYP3A4 substrate.

In vitro studies using human liver microsomes indicate that MMAE inhibits CYP3A4/5 but not other CYP450 isoforms. MMAE did not induce any major CYP450 enzymes in human hepatocytes.

In vitro studies indicate that MMAE is a substrate and not an inhibitor of the efflux transporter P-glycoprotein (P-gp).

## **13 NONCLINICAL TOXICOLOGY**

### **13.1 Carcinogenesis, Mutagenesis, Impairment of Fertility**

Carcinogenicity studies with brentuximab vedotin or the small molecule (MMAE) have not been conducted.

MMAE was genotoxic in the rat bone marrow micronucleus study through an aneugenic mechanism. This effect is consistent with the pharmacological effect of MMAE as a microtubule-disrupting agent. MMAE was not mutagenic in the bacterial reverse mutation assay (Ames test) or the L5178Y mouse lymphoma forward mutation assay.

Fertility studies with brentuximab vedotin or MMAE have not been conducted. However, results of repeat-dose toxicity studies in rats indicate the potential for brentuximab vedotin to impair male reproductive function and fertility. In a 4-week repeat-dose toxicity study in rats with weekly dosing at 0.5, 5, or 10 mg/kg brentuximab vedotin, seminiferous tubule degeneration, Sertoli cell vacuolation, reduced spermatogenesis, and aspermia were observed. Effects in animals were seen mainly at 5 and 10 mg/kg of brentuximab vedotin. These doses are approximately 3 and 6-fold the human recommended dose of 1.8 mg/kg, respectively, based on body weight.

## 14 CLINICAL STUDIES

### 14.1 Classical Hodgkin Lymphoma

#### **Randomized Clinical Trial in Previously Untreated Stage III or IV Classical Hodgkin Lymphoma (Study 5: ECHELON-1, NCT01712490)**

The efficacy of ADCETRIS in combination with chemotherapy for the treatment of patients with previously untreated Stage III or IV cHL was evaluated in a randomized, open-label, 2-arm, multicenter trial. Of the 1334 total patients, 664 patients were randomized to the ADCETRIS + doxorubicin [A], vinblastine [V] and dacarbazine [D] (ADCETRIS + AVD) arm and 670 patients were randomized to the A+ bleomycin [B] + V + D (ABVD) arm. Patients in both treatment arms were treated intravenously on Days 1 and 15 of each 28-day cycle for up to 6 cycles. Dosing in each treatment arm was administered according to the following:

- ADCETRIS + AVD arm: ADCETRIS 1.2 mg/kg over 30 minutes, doxorubicin 25 mg/m<sup>2</sup>, vinblastine 6 mg/m<sup>2</sup>, and dacarbazine 375 mg/m<sup>2</sup>
- ABVD arm: doxorubicin 25 mg/m<sup>2</sup>, bleomycin 10 units/m<sup>2</sup>, vinblastine 6 mg/m<sup>2</sup>, and dacarbazine 375 mg/m<sup>2</sup>

Efficacy was established based on modified progression-free survival (modified PFS) per independent review facility (IRF). A modified PFS event is defined as progression, death, or receipt of additional anticancer therapy for patients who are not in a complete response (CR) after completion of frontline therapy.

Patients had Stage III (36%) or IV disease (64%), and 62% had extranodal involvement at diagnosis. Most patients were male (58%) and white (84%). The median age was 36 years (range, 18-83); 186 patients (14%) were 60 years or older.

The efficacy results are summarized in Table 10.

**Table 10: Efficacy Results in Patients with Previously Untreated Stage III or IV Classical HL (Study 5: ECHELON-1)**

<b>Modified Progression-Free Survival per IRF+</b>	<b>ADCETRIS + AVD N=664</b>	<b>ABVD N=670</b>
Number of events (%)	117 (18%)	146 (22%)
Median months (95% CI)	NE*	NE*
Hazard ratio (95% CI) <sup>a</sup>	0.77 (0.60, 0.98)	
P-value <sup>b</sup>	0.035	
Reason leading to a modified PFS event		
Progressive disease	90 (14)	102 (15)
Death due to any cause	18 (3)	22 (3)
Receipt of additional anticancer therapy for patients not in CR after frontline therapy	9 (1)	22 (3)

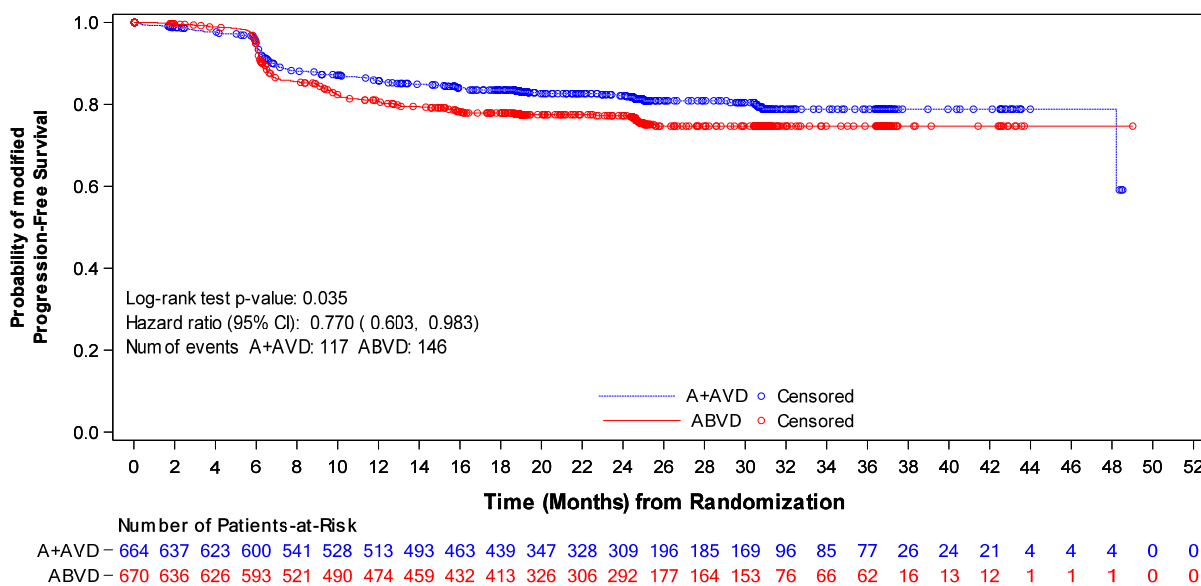
\* Not estimable

+ At the time of analysis, the median follow-up time for both arms was 24.6 months

<sup>a</sup> Hazard ratio (A+AVD/ABVD) and 95% confidence intervals are based on a stratified Cox's proportional hazard regression model with stratification factors region and number of International Prognostic Factor Project (IPFP) risk factors at baseline with treatment as the explanatory variable in the model.

<sup>b</sup> P-value is from a stratified log-rank test with stratification factors baseline IPFP group and region; alpha = 0.05.

**Figure 1: Kaplan-Meier Curve of IRF-Assessed Modified Progression-Free Survival (Study 5: ECHELON-1)**



A+AVD = ADCETRIS plus AVD (doxorubicin, vinblastine, and dacarbazine)

ABVD = doxorubicin, bleomycin, vinblastine, and dacarbazine

The first post-treatment response assessment (CT and PET scan) was performed 3-7 weeks after the last dose of frontline therapy, which corresponds to about 6-7 months after the first dose of study drug.

At the time of the modified PFS analysis, an interim OS analysis did not demonstrate a significant difference. The CR rate per IRF assessment at the end of the randomized regimen was 73% on the A+AVD arm and 70% on the ABVD arm.

### **Randomized Placebo-Controlled Clinical Trial in Classical Hodgkin Lymphoma Post-Auto-HSCT Consolidation (Study 3: AETHERA, NCT01100502)**

The efficacy of ADCETRIS in patients with cHL at high risk of relapse or disease progression post-auto-HSCT was studied in a randomized, double-blind, placebo-controlled clinical trial. Three hundred twenty-nine (329) patients were randomized 1:1 to receive placebo or ADCETRIS 1.8 mg/kg intravenously over 30 minutes every 3 weeks for up to 16 cycles, beginning 30–45 days post-auto-HSCT. Patients in the placebo arm with progressive disease per investigator could receive ADCETRIS as part of a separate trial. The primary endpoint was progression-free survival (PFS) determined by independent review facility (IRF). Standard international guidelines were followed for infection prophylaxis for HSV, VZV, and PJP post-auto-HSCT [see *Clinical Trial Experience (6.1)*].

High risk of post-auto-HSCT relapse or progression was defined according to status following frontline therapy: refractory, relapse within 12 months, or relapse ≥12 months with extranodal



disease. Patients were required to have obtained a complete response (CR), partial response (PR), or stable disease (SD) to most recent pre-auto-HSCT salvage therapy.

A total of 329 patients were enrolled and randomized (165 ADCETRIS, 164 placebo); 327 patients received study treatment. Patient demographics and baseline characteristics were generally balanced between treatment arms. The 329 patients ranged in age from 18–76 years (median, 32 years) and most were male (53%) and white (94%). Patients had received a median of 2 prior systemic therapies (range, 2–8) excluding autologous hematopoietic stem cell transplantation.

The efficacy results are summarized in Table 11. PFS is calculated from randomization to date of disease progression or death (due to any cause). The median PFS follow-up time from randomization was 22 months (range, 0–49). Study 3 (AETHERA) demonstrated a statistically significant improvement in IRF-assessed PFS and increase in median PFS in the ADCETRIS arm compared with the placebo arm. At the time of the PFS analysis, an interim overall survival analysis demonstrated no difference.

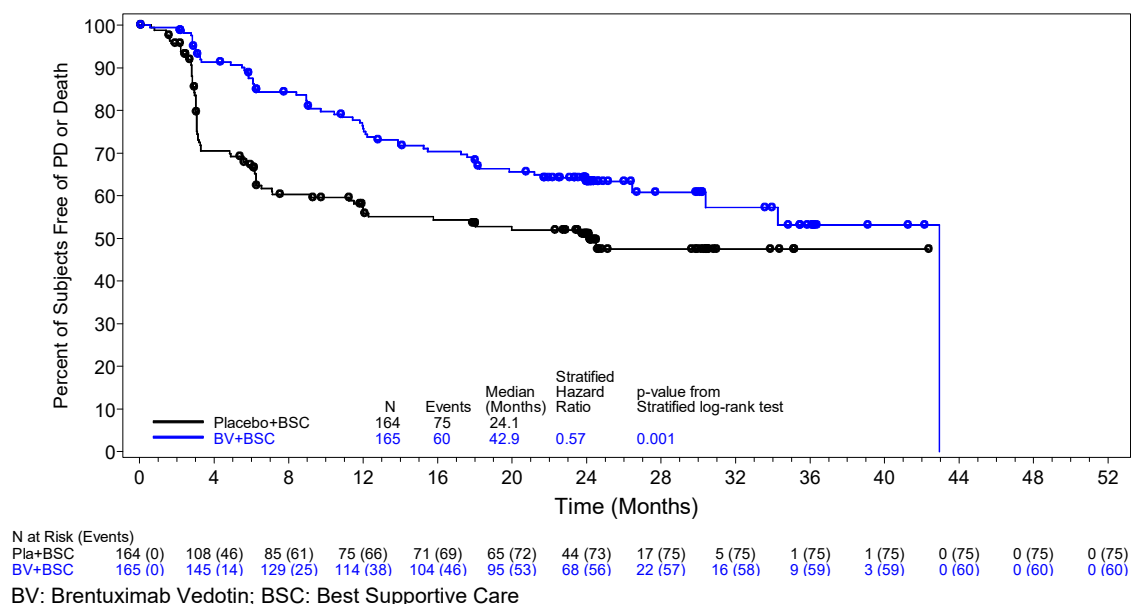
**Table 11: Efficacy Results in Patients with Classical Hodgkin Lymphoma Post-Auto-HSCT Consolidation (Study 3: AETHERA)**

Progression-Free Survival per IRF	ADCETRIS N = 165	Placebo N = 164
Number of events (%)	60 (36)	75 (46)
Median months (95% CI)	42.9+ (30.4, 42.9+)	24.1 (11.5, NE*)
Stratified Hazard Ratio (95% CI)	0.57 (0.40, 0.81)	
Stratified Log-Rank Test P-value	0.001	

\* Not estimable

+ Estimates are unreliable

**Figure 2: Kaplan-Meier Curve of IRF-Assessed Progression-Free Survival (Study 3: AETHERA)**



### ***Clinical Trial in Relapsed Classical Hodgkin Lymphoma (Study 1, NCT00848926)***

The efficacy of ADCETRIS in patients with cHL who relapsed after autologous hematopoietic stem cell transplantation was evaluated in one open-label, single-arm, multicenter trial. One hundred two (102) patients were treated with 1.8 mg/kg of ADCETRIS intravenously over 30 minutes every 3 weeks. An independent review facility (IRF) performed efficacy evaluations which included overall response rate (ORR = complete response [CR] + partial response [PR]) and duration of response as defined by clinical and radiographic measures including computed tomography (CT) and positron-emission tomography (PET) as defined in the 2007 Revised Response Criteria for Malignant Lymphoma (modified).

The 102 patients ranged in age from 15–77 years (median, 31 years) and most were female (53%) and white (87%). Patients had received a median of 5 prior therapies including autologous hematopoietic stem cell transplantation.

The efficacy results are summarized in Table 12. Duration of response is calculated from date of first response to date of progression or data cutoff date.

**Table 12: Efficacy Results in Patients with Classical Hodgkin Lymphoma (Study 1)**

	N = 102		
	Percent (95% CI)	Duration of Response, in months	
		Median (95% CI)	Range
CR	32 (23, 42)	20.5 (12.0, NE*)	1.4 to 21.9+
PR	40 (32, 49)	3.5 (2.2, 4.1)	1.3 to 18.7
ORR	73 (65, 83)	6.7 (4.0, 14.8)	1.3 to 21.9+

\*Not estimable

+Follow up was ongoing at the time of data submission

### **14.2 Systemic Anaplastic Large Cell Lymphoma and Other CD30-Expressing Peripheral T-Cell Lymphomas**

#### ***Randomized Clinical Trial in Previously Untreated Systemic Anaplastic Large Cell Lymphoma or Other CD30-Expressing Peripheral T-Cell Lymphomas (Study 6: ECHELON-2, NCT01777152)***

The efficacy of ADCETRIS in combination with chemotherapy for the treatment of adult patients with previously untreated, CD30-expressing PTCL was evaluated in a multicenter, randomized, double-blind, double-dummy, actively controlled trial. For enrollment, the trial required CD30 expression  $\geq 10\%$  per immunohistochemistry. The trial excluded patients with primary cutaneous CD30-positive T-cell lymphoproliferative disorders and lymphomas. The trial required hepatic transaminases  $\leq 3$  times ULN, total bilirubin  $\leq 1.5$  times ULN, and serum creatinine  $\leq 2$  times ULN.

Of the 452 total patients, 226 patients were randomized to the ADCETRIS + CHP arm and 226 patients were randomized to the CHOP arm. Patients in both treatment arms were treated intravenously on Day 1 of each 21-day cycle for 6 to 8 cycles; prednisone was administered orally on Days 1-5. Dosing in each treatment arm was administered according to the following:

- ADCETRIS + CHP arm: ADCETRIS 1.8 mg/kg over 30 minutes, cyclophosphamide 750 mg/m<sup>2</sup>, doxorubicin 50 mg/m<sup>2</sup>, and prednisone 100 mg orally
- CHOP arm: cyclophosphamide 750 mg/m<sup>2</sup>, doxorubicin 50 mg/m<sup>2</sup>, vincristine 1.4 mg/m<sup>2</sup>, and prednisone 100 mg orally

The median age was 58 years (range: 18 to 85), 63% were male, 62% were White, 22% were Asian, and 78% had an ECOG performance status of 0-1. Of the 452 patients enrolled, the disease subtypes included patients with systemic ALCL [70%; 48% anaplastic lymphoma kinase (ALK) negative and 22% ALK positive], PTCL not otherwise specified (16%), angioimmunoblastic T-cell lymphoma (12%), adult T-cell leukemia/lymphoma (2%), and enteropathy-associated T-cell lymphoma (<1%). Most patients had Stage III or IV disease (81%) and a baseline international prognostic index of 2 or 3 (63%).

During randomized treatment, on the ADCETRIS + CHP arm, 70% of patients received 6 cycles and 18% of patients received 8 cycles. On the CHOP arm, 62% of patients received 6 cycles and 19% received 8 cycles.

Efficacy was based on IRF-assessed PFS, which was defined as time from randomization to progression, death due to any cause, or receipt of subsequent anticancer chemotherapy to treat residual or progressive disease. Other efficacy endpoints included PFS in patients with systemic ALCL, overall survival, complete response rate, and overall response rate. Efficacy results are summarized in Table 13: Kaplan-Meier curves for PFS and overall survival are presented in Figure 3 and Figure 4, respectively.

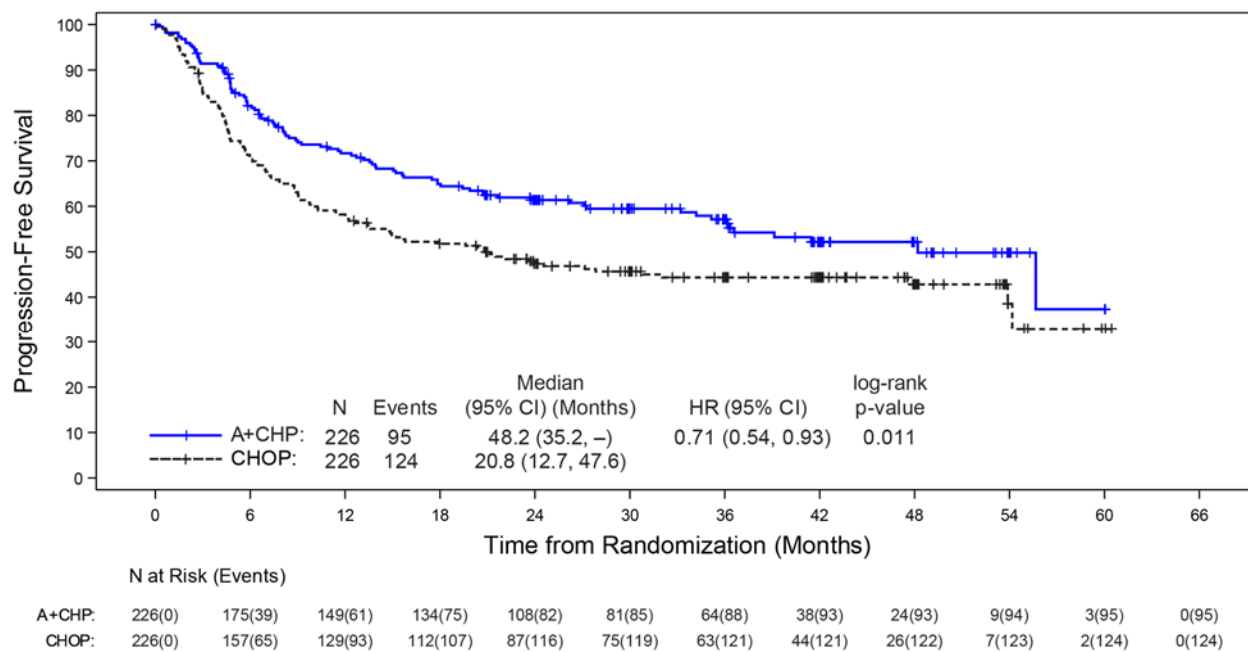
**Table 13: Efficacy Results in Patients with Previously Untreated, CD30-Expressing PTCL (Study 6: ECHELON-2)**

Outcomes per IRF <sup>a</sup>	ADCETRIS + CHP N=226	CHOP N=226
<b>PFS</b>		
Number of events, n (%)	95 (42)	124 (55)
Median PFS, months (95% CI)	48.2 (35.2, NE)	20.8 (12.7, 47.6)
Hazard ratio (95% CI) <sup>b</sup>	0.71 (0.54, 0.93)	
P-value <sup>c</sup>	0.011	
Reason leading to a PFS event, n (%)		
Progressive disease	71 (31)	86 (38)
Death	13 (6)	17 (8)
Receipt of subsequent anticancer chemotherapy to treat residual or progressive disease	11 (5)	21 (9)
<b>PFS for patients with sALCL</b>		
N	163	151
Number of patients with a PFS event, n (%)	56 (34)	73 (48)
Median PFS, months (95% CI)	55.7 (48.2, NE)	54.2 (13.4, NE)
Hazard ratio (95% CI) <sup>b</sup>	0.59 (0.42, 0.84)	
P-value <sup>c</sup>	0.003	
<b>OS<sup>d</sup></b>		
Number of deaths	51 (23)	73 (32)
Median OS, months (95% CI)	NE (NE, NE)	NE (54.2, NE)
Hazard ratio (95% CI) <sup>b</sup>	0.66 (0.46, 0.95)	
P-value <sup>c</sup>	0.024	
<b>CR Rate<sup>e</sup></b>		
% (95% CI)	68 (61, 74)	56 (49, 62)
P-value <sup>f</sup>	0.007	
<b>ORR<sup>e</sup></b>		
% (95% CI)	83 (78, 88)	72 (66, 78)
P-value <sup>f</sup>	0.003	

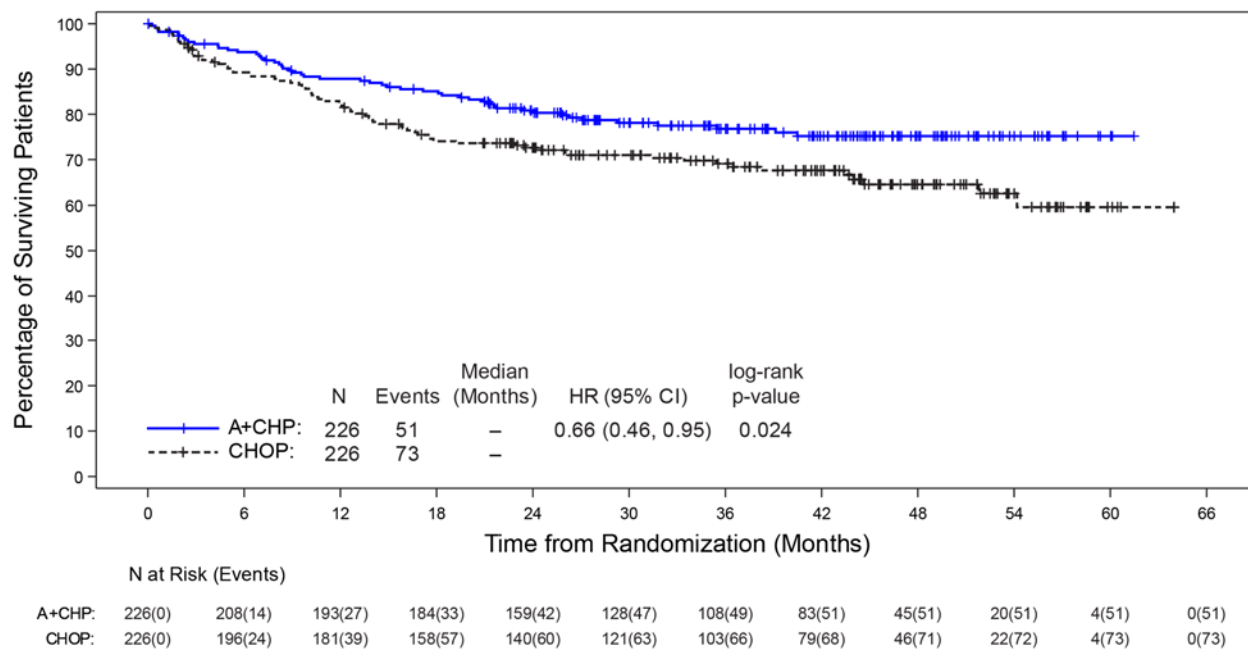
NE: Not estimable

- a Efficacy endpoints were tested at a two-sided alpha level 0.05 in the following order: PFS in ITT, PFS in the sALCL subgroup, complete remission rate, overall survival, and objective response rate in ITT.
- b Hazard ratio (A+CHP/CHOP) and 95% confidence intervals are based on a stratified Cox's proportional hazard regression model with the following stratification factors (ALK-positive sALCL and International Prognostic Index [IPI] score at baseline).
- c P-value is calculated using a stratified log-rank test.
- d Median OS follow-up in the ADCETRIS+CHP arm was 41.9 months; in the CHOP arm was 42.2 months.
- e Best response per 2007 International Working Group Criteria at end of treatment.
- f P-value is calculated using a stratified Cochran-Mantel-Haenszel test

**Figure 3: Kaplan-Meier Curve of IRF-Assessed Progression-Free Survival (Study 6: ECHELON-2)**



**Figure 4: Overall Survival (Study 6: ECHELON-2)**



Median overall survival was not reached in either treatment arm.

### 14.3 Systemic Anaplastic Large Cell Lymphoma

#### *Clinical Trial in Relapsed sALCL (Study 2, NCT00866047)*

The efficacy of ADCETRIS in patients with relapsed sALCL was evaluated in one open-label, single-arm, multicenter trial. This trial included patients who had sALCL that was relapsed after

prior therapy. Fifty-eight (58) patients were treated with 1.8 mg/kg of ADCETRIS administered intravenously over 30 minutes every 3 weeks. An IRF performed efficacy evaluations which included overall response rate (ORR = complete response [CR] + partial response [PR]) and duration of response as defined by clinical and radiographic measures including computed tomography (CT) and positron-emission tomography (PET) as defined in the 2007 Revised Response Criteria for Malignant Lymphoma (modified).

The 58 patients ranged in age from 14–76 years (median, 52 years) and most were male (57%) and white (83%). Patients had received a median of 2 prior therapies; 26% of patients had received prior autologous hematopoietic stem cell transplantation. Fifty percent (50%) of patients were relapsed, and 50% of patients were refractory to their most recent prior therapy. Seventy-two percent (72%) were anaplastic lymphoma kinase (ALK)-negative.

The efficacy results are summarized in Table 14. Duration of response is calculated from date of first response to date of progression or data cutoff date.

**Table 14: Efficacy Results in Patients with Systemic Anaplastic Large Cell Lymphoma (Study 2)**

	N = 58		
	Percent (95% CI)	Duration of Response, in months	
		Median (95% CI)	Range
CR	57 (44, 70)	13.2 (10.8, NE*)	0.7 to 15.9+
PR	29 (18, 41)	2.1 (1.3, 5.7)	0.1 to 15.8+
ORR	86 (77, 95)	12.6 (5.7, NE*)	0.1 to 15.9+

\*Not estimable

+ Follow up was ongoing at the time of data submission

#### 14.4 Primary Cutaneous Anaplastic Large Cell Lymphoma and CD30-Expressing Mycosis Fungoides

##### ***Randomized Clinical Trial in Primary Cutaneous Anaplastic Large Cell Lymphoma and CD30-expressing Mycosis Fungoides (Study 4: ALCANZA, NCT01578499)***

The efficacy of ADCETRIS in patients with primary cutaneous anaplastic large cell lymphoma (pcALCL) or mycosis fungoides (MF) requiring systemic therapy was studied in ALCANZA, a randomized, open-label, multicenter clinical trial. In ALCANZA, one hundred thirty-one (131) patients were randomized 1:1 to receive ADCETRIS 1.8 mg/kg intravenously over 30 minutes every 3 weeks or physician’s choice of methotrexate (5 to 50 mg orally weekly) or bexarotene (300 mg/m<sup>2</sup> orally daily). The randomization was stratified by baseline disease diagnosis (MF or pcALCL). Patients could receive a maximum of 16 cycles (21-day cycle) of therapy every 3 weeks for those receiving brentuximab vedotin or 48 weeks of therapy for those in the control arm.

Patients with pcALCL must have received prior radiation or systemic therapy, and must have at least 1 biopsy with CD30-expression of ≥10%. Patients with MF must have received prior systemic therapy and have had skin biopsies from at least 2 separate lesions, with CD30-expression of ≥10% in at least 1 biopsy.

A total of 131 patients were randomized (66 ADCETRIS, 65 physician's choice). The efficacy results were based on 128 patients (64 patients in each arm with CD30-expression of  $\geq 10\%$  in at least one biopsy). Among 128 patients, the patients' age ranged from 22–83 years (median, 60 years), and 55% of them were male and 85% of them were white. Patients had received a median of 4 prior therapies (range, 0–15), including a median of 1 prior skin-directed therapy (range, 0–9) and 2 systemic therapies (range, 0–11). At study entry, patients were diagnosed as Stage 1 (25%), Stage 2 (38%), Stage 3 (5%), or Stage 4 (13%).

Efficacy was established based on the proportion of patients achieving an objective response (CR+PR) that lasts at least 4 months (ORR4). ORR4 was determined by independent review facility (IRF) using the global response score (GRS), consisting of skin evaluations per modified severity-weighted assessment tool (mSWAT), nodal and visceral radiographic assessment, and detection of circulating Sézary cells (MF patients only). Additional efficacy outcome measures included proportion of patients achieving a complete response (CR) per IRF, and progression-free survival (PFS) per IRF.

The efficacy results are summarized in Table 15 below and the Kaplan-Meier curves of IRF-assessed PFS are shown in Figure 5.

**Table 15: Efficacy Results in Patients with Relapsed pcALCL or CD30-expressing MF (Study 4: ALCANZA)**

	<b>ADCETRIS N = 64</b>	<b>Physician's Choice<sup>a</sup> N = 64</b>
<b>ORR4<sup>b</sup></b>		
Percent (95% CI <sup>c</sup> )	56.3 (44.1, 68.4)	12.5 (4.4, 20.6)
P-value <sup>d</sup>	<0.001	
<b>ORR</b>	67.2 (55.7, 78.7)	20.3 (10.5, 30.2)
<b>CR</b>		
Percent (95% CI <sup>c</sup> )	15.6 (7.8, 26.9)	1.6 (0, 8.4)
P-value <sup>d,e</sup>	0.0066	
<b>PR</b>	51.6 (39.3, 63.8)	18.8 (9.2, 28.3)
<b>PFS</b>		
Number of events (%)	36 (56.3)	50 (78.1)
Median months (95% CI <sup>c</sup> )	16.7 (14.9, 22.8)	3.5 (2.4, 4.6)
Hazard Ratio (95% CI <sup>c</sup> )	0.27 (0.17, 0.43)	
Log-Rank Test P-value <sup>d,e</sup>	<0.001	

<sup>a</sup> Physician's choice of either methotrexate or bexarotene

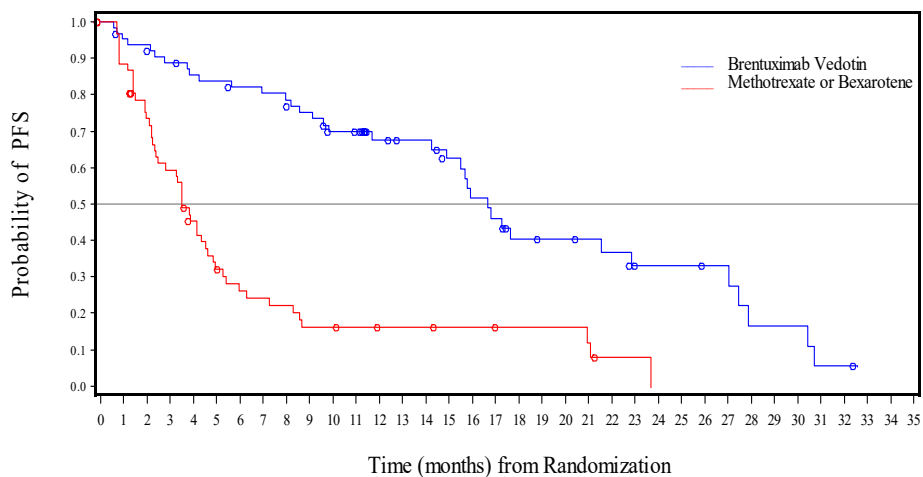
<sup>b</sup> ORR4 is defined as proportion of patients achieving an objective response (CR+PR) that lasts at least 4 months

<sup>c</sup> CI=Confidence Interval

<sup>d</sup> Test of the treatment difference was stratified by baseline disease diagnosis (MF or pcALCL)

<sup>e</sup> Adjusted for multiplicity

**Figure 5: Kaplan-Meier Curve of Progression-free Survival (Study 4: ALCANZA)**



Number of patients at risk																																			
Brentuximab Vedotin	64	59	58	54	51	50	48	47	46	43	38	38	29	27	27	23	19	17	13	12	12	11	10	8	7	7	7	6	3	3	3	1	1		
Methotrexate or Bexarotene	64	54	42	34	24	17	13	12	11	8	8	7	7	6	5	5	5	4	4	4	3	1	1												

Supportive trials include 2 single-arm trials, which enrolled patients with MF who were treated with ADCETRIS 1.8 mg/kg intravenously over 30 minutes every 3 weeks. Out of 73 patients with MF from the 2 pooled supportive trials, 34% (25/73) achieved ORR4. Among these 73 patients, 35 had 1% to 9% CD30-expression and 31% (11/35) achieved ORR4.

## 15 REFERENCES

1. OSHA Hazardous Drugs. OSHA. [Accessed on 30 July 2013, from <http://www.osha.gov/SLTC/hazardousdrugs/index.html>]

## 16 HOW SUPPLIED/STORAGE AND HANDLING

### 16.1 How Supplied

ADCETRIS (brentuximab vedotin) for Injection is supplied as a sterile, white to off-white preservative-free lyophilized cake or powder in individually-boxed single-dose vials:

- NDC (51144-050-01), 50 mg brentuximab vedotin.

### 16.2 Storage

Store vial at 2–8°C (36–46°F) in the original carton to protect from light.

### 16.3 Special Handling

ADCETRIS is an antineoplastic product. Follow special handling and disposal procedures<sup>1</sup>.



## 17 PATIENT COUNSELING INFORMATION

### Peripheral Neuropathy

Advise patients that ADCETRIS can cause a peripheral neuropathy. They should be advised to report to their health care provider any numbness or tingling of the hands or feet or any muscle weakness [see *Warnings and Precautions (5.1)*].

### Fever/Neutropenia

Advise patients to contact their health care provider if a fever of 100.5°F or greater or other evidence of potential infection such as chills, cough, or pain on urination develops [see *Warnings and Precautions (5.3)*].

### Infusion Reactions

Advise patients to contact their health care provider if they experience signs and symptoms of infusion reactions including fever, chills, rash, or breathing problems within 24 hours of infusion [see *Warnings and Precautions (5.2)*].

### Hepatotoxicity

Advise patients to report symptoms that may indicate liver injury, including fatigue, anorexia, right upper abdominal discomfort, dark urine, or jaundice [see *Warnings and Precautions (5.8)*].

### Progressive Multifocal Leukoencephalopathy

Instruct patients receiving ADCETRIS to immediately report if they have any of the following neurological, cognitive, or behavioral signs and symptoms or if anyone close to them notices these signs and symptoms [see *Boxed Warning, Warnings and Precautions (5.9)*]:

- changes in mood or usual behavior
- confusion, thinking problems, loss of memory
- changes in vision, speech, or walking
- decreased strength or weakness on one side of the body

### Pulmonary Toxicity

Instruct patients to report symptoms that may indicate pulmonary toxicity, including cough or shortness of breath [see *Warnings and Precautions (5.10)*].

### Acute Pancreatitis

Advise patients to contact their health care provider if they develop severe abdominal pain [see *Warnings and Precautions (5.12)*].

### Gastrointestinal Complications

Advise patients to contact their health care provider if they develop severe abdominal pain, chills, fever, nausea, vomiting, or diarrhea [see *Warnings and Precautions (5.12)*].

### Females and Males of Reproductive Potential

ADCETRIS can cause fetal harm. Advise women receiving ADCETRIS to avoid pregnancy during ADCETRIS treatment and for at least 6 months after the final dose of ADCETRIS.

Advise males with female sexual partners of reproductive potential to use effective contraception during ADCETRIS treatment and for at least 6 months after the final dose of ADCETRIS [see *Use in Specific Populations (8.3)*].


Advise patients to report pregnancy immediately [see *Warnings and Precautions (5.13)*].

### Lactation

Advise patients to avoid breastfeeding while receiving ADCETRIS [see *Use in Specific Populations (8.2)*].



Manufactured by:  
Seattle Genetics, Inc.  
Bothell, WA 98021  
1-855-473-2436  
U.S. License 1853

ADCETRIS, Seattle Genetics and  are US registered trademarks of Seattle Genetics, Inc.  
© 2018 Seattle Genetics, Inc., Bothell, WA 98021. All rights reserved.